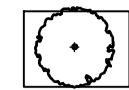
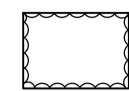

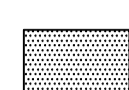
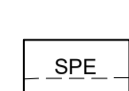
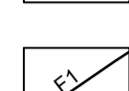
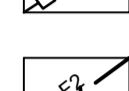
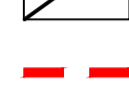




**LEGEND**

-  PROPOSED TREES  
Refer Plant Schedule, Specification & Detail 02/L02.
-  GARDEN BED PLANTING  
Refer Plant Schedule, Specification & Planting Plans 01/L03 & 02/L03 & Detail 03/L03
-  GRASSING  
Refer Specification
-  GRASSING - INSTANT TURF  
Refer Specification and Detail 03/L02
-  SPADE EDGING  
Refer Detail 04/L03 and Specification
-  FENCING F1 - BOLLARD & CABLE FENCE  
Refer Detail 05/L03 and Specification
-  FENCING F2 - TIMBER PALING FENCE  
By Civil
-  STAGE BOUNDARY

**CULTIVATION NOTE**

Cultivation to be approved by the Superintendent prior to Civil placing topsoil.

**DRAWING ACCURACY**

This drawing has been prepared upon Engineering drawings which may have been superseded. The Contractor is advised to consult with other trades and the Construction Manager should any discrepancies become apparent prior to & during construction.

**SERVICES NOTES**

Location of all services are to be confirmed on site. Contact 'Dial Before You Dig' & Refer Civil drawings for services key and further detail.

**SETOUT NOTE**

Setout to be approved on site by the Superintendent prior to commencement of construction works.

**TREE SETOUT GUIDELINES**

1. Street trees are to be positioned on site generally in accordance with the following offsets, where possible:
  - Pedestrian pathways 1.2m
  - Driveways 2.5m
  - Side entry pits or standard pits 2m
  - Service crossings 2.5m
  - Fire plugs 2.5m
  - Domestic service tapping points 2.5m
  - Stormwater outlet points 2.5m
  - Intersections 10m (or following splay of the Lot)
  - Electrical infrastructure 2.5
  - Light poles 3m
2. Proposed trees may require removal / relocation to allow for services, crossovers and lighting.
3. Nature strip trees are to be located mid-way between front of path and back of kerb (except where indicated otherwise on the drawing). Where a footpath is not provided, trees are to be placed as though a footpath existed.
4. Trees are not to be placed directly above services.
5. Final setout of trees to be confirmed on site by the Superintendent & Council prior to installation.

**CITY OF MELTON**  
ENGINEERING PLANS  
(LANDSCAPE)  
**APPROVED**  
*E. Wisk* 16 Jun 2022  
CITY DESIGN DATE

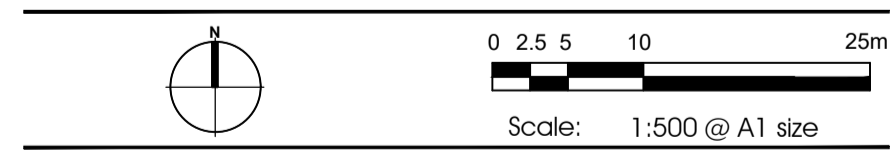
**FOR TOWN PLANNING**  
**NOT FOR CONSTRUCTION**

Rev	Date	Description

451 BEATYS DEVELOPMENT PTY LTD

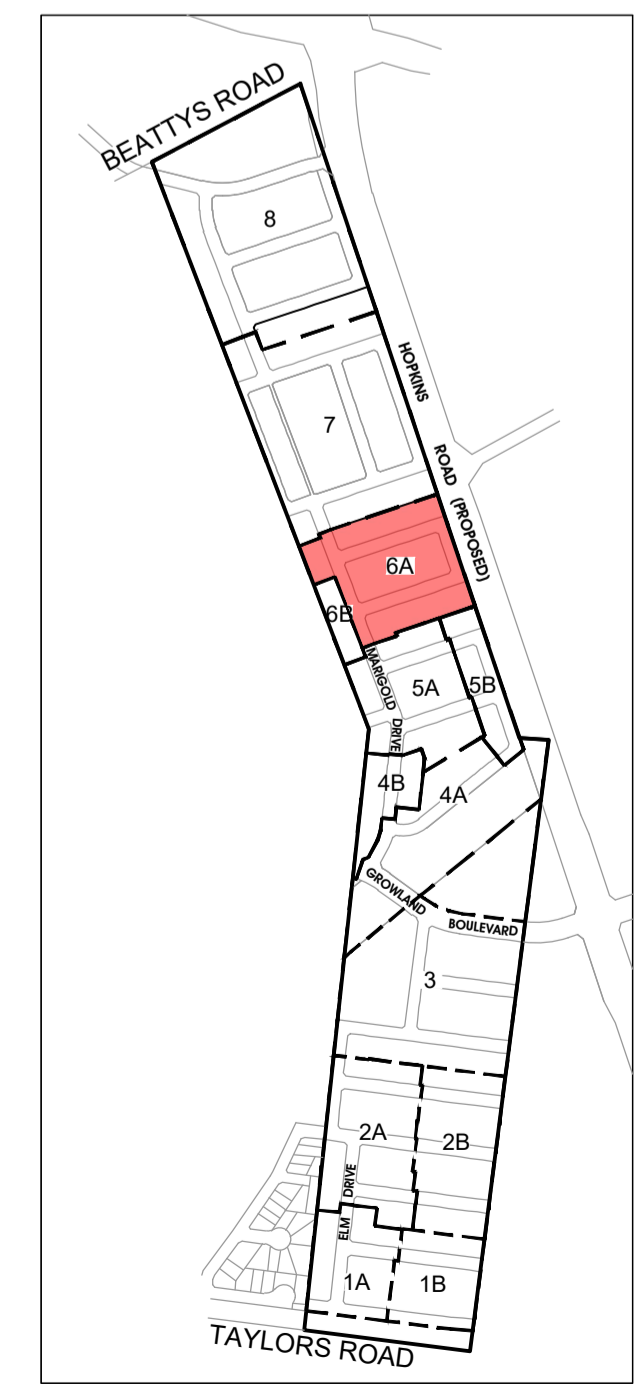
**BOTANIA RESIDENTIAL SUBDIVISION**  
1152-1174 TAYLORS ROAD & 451-471 BEATYS ROAD, PLUMPTON

**STAGE 6A DESIGN DEVELOPMENT**  
**LANDSCAPE STREETScape PLAN**



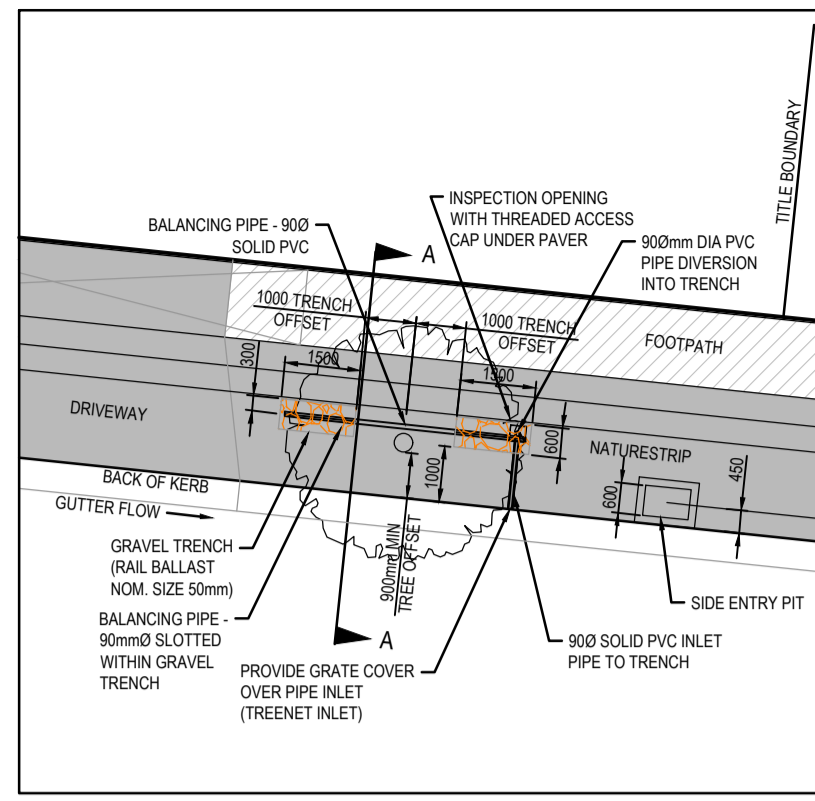
**CDA Design Group Pty Ltd**  
Landscape Architecture  
Urban Design  
185 Faraday Street  
Carlton Victoria 3053  
T 03 9349 5866  
F 03 9349 5877  
E office@cdaesigngroup.com.au

Project No. 19029\_6A  
Date: MAY 2022  
Drawn by: KH  
Checked: TV  
Drawing No. LO1

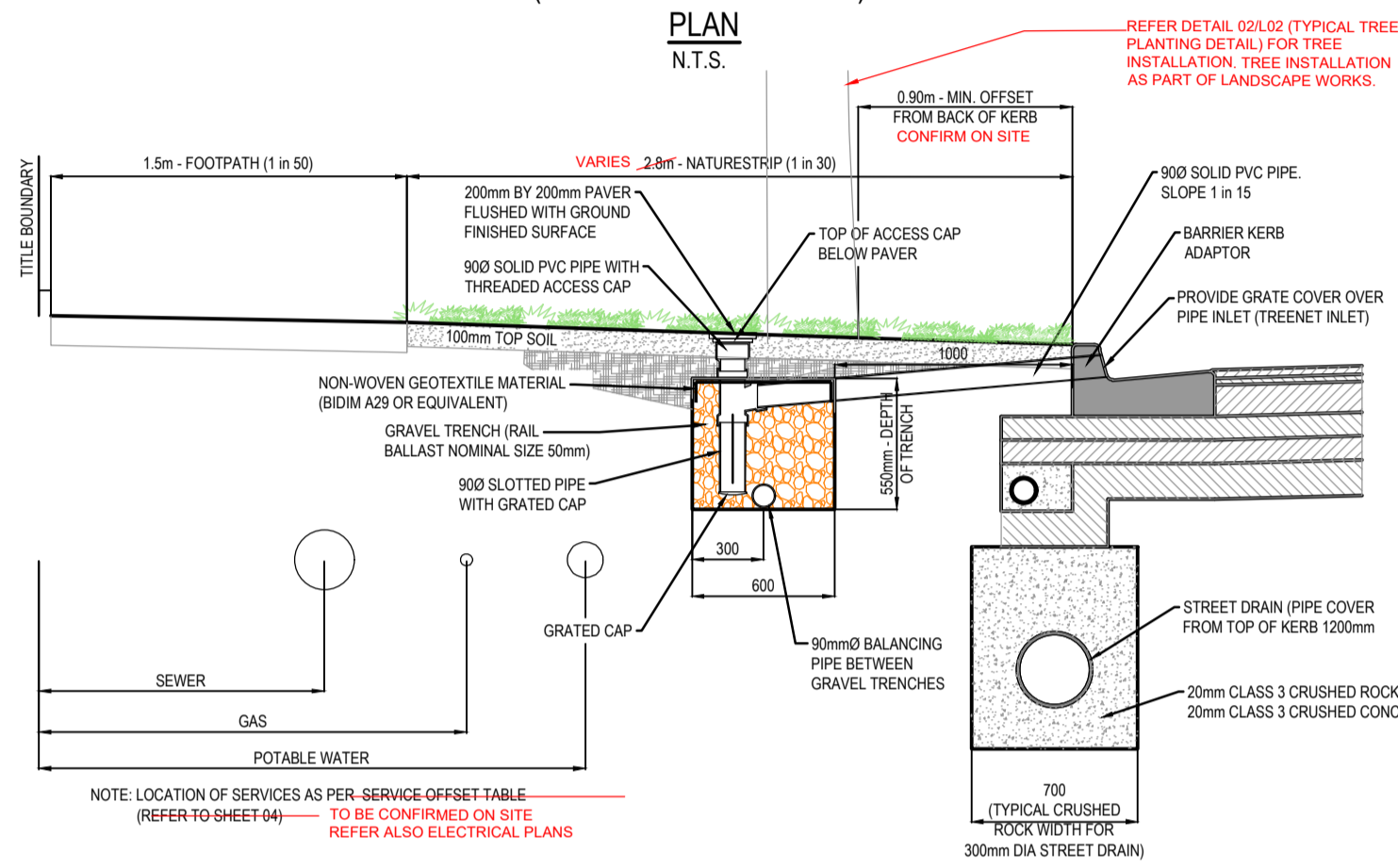



**PLANT SCHEDULE (STAGE 6A STREETScape)**

SYMBOL	BOTANICAL NAME	COMMON NAME	MATURE HEIGHT & SPREAD (m)	INSTALLED POT SIZE	INSTALLED HEIGHT (min)	QUANTITY
<b>STREET TREES</b>						
Am	<i>Acacia melanoxylon</i>	Blackwood	14.0 x 9.0m	45Lt / 30mm cal.	2.0m	21
Cc	<i>Corymbia citriodora</i>	Lemon Scented Gum	25.0 x 12.0m	45Lt / 30mm cal.	2.0m	11
Em	<i>Eucalyptus mannifera</i> 'Little Spotty'	Brittle Gum	8.0 x 6.0m	45Lt / 30mm cal.	2.0m	16
Up	<i>Ulmus parvifolia</i> 'Todd'	Chinese Elm	10.0 x 9.0m	45Lt / 30mm cal.	2.0m	18



PASSIVE STREET TREE IRRIGATION GRAVEL TRENCH (KERB INLET DIVERSION)



PASSIVE STREET TREE IRRIGATION GRAVEL TRENCH (KERB INLET DIVERSION) CROSS SECTION A-A

NATURESTRIP WIDTH (m)	GRAVEL TRENCH OFFSET FROM BACK OF KERB (mm)
≤ 2.50	700
2.80	800
≥ 4.35	1000

**GENERAL NOTES**

- AT HIGHLY CONSTRAINED SITES, GRAVEL TRENCHES CAN BE MODIFIED IN THE FOLLOWING WAYS:
  - REDUCED OFFSET OF 0.75m FROM TREE CENTRELINE
  - DIMENSION 1.0m LONG x 0.6m WIDE x 0.75m DEEP
  - NATURESTRIP ≤ 2.5m DIMENSION CAN BE 1.5m LONG x 0.4m WIDE x 0.75m DEEP

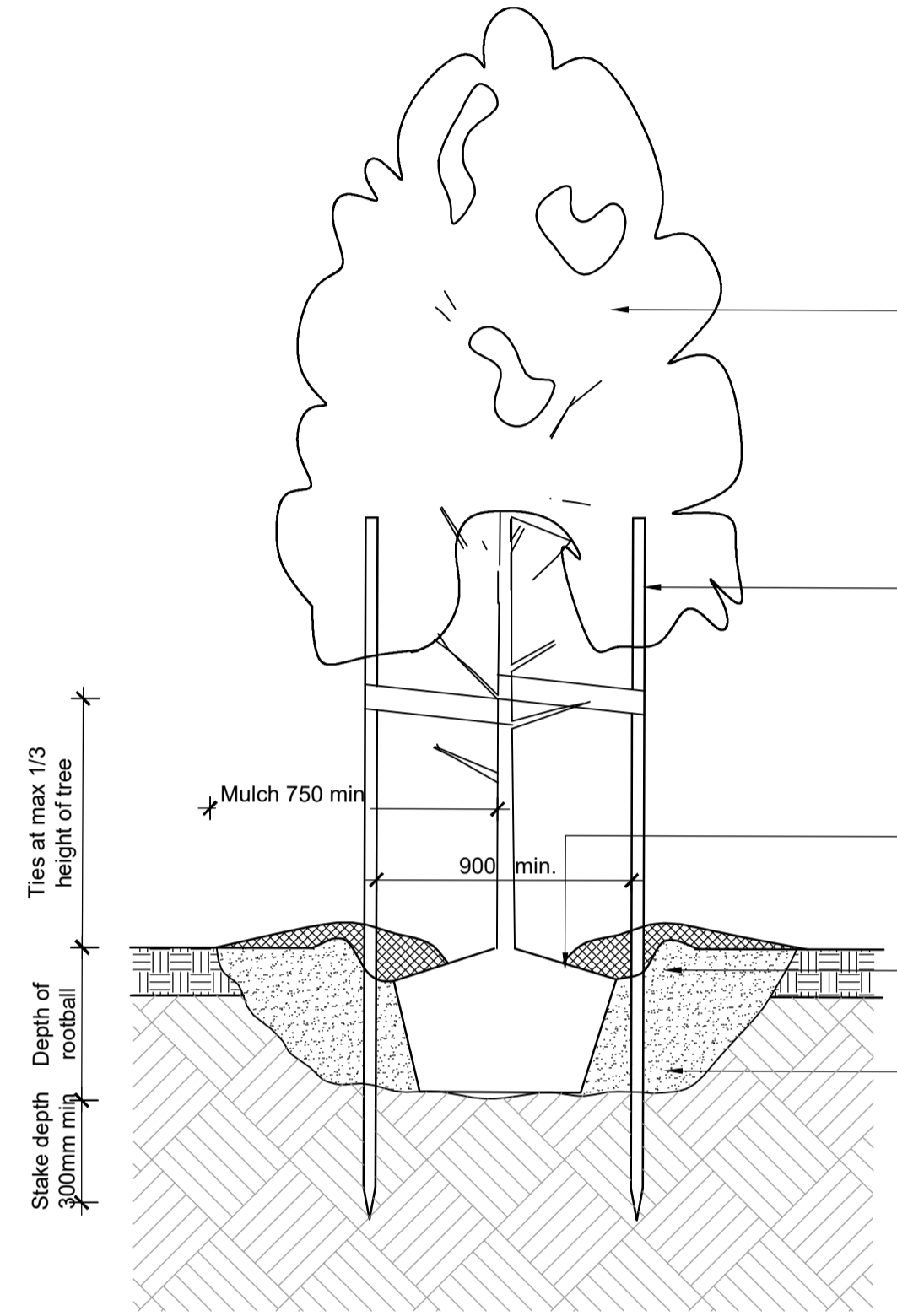
**NOTES**

- FOR PASSIVE STREET TREE IRRIGATION DETAIL REFER TO MELTON CITY COUNCIL STANDARD DRAWING, PASSIVE STREET TREE IRRIGATION GRAVEL TRENCH (KERB INLET DIVERSION)
- PASSIVE IRRIGATION PIPES AND FITTINGS TO BE 90mm PVC SEWER CLASS
- ALL PVC JOINTS TO BE SEALED WITH SOLVENT CEMENT
- ALL GRASSED AREAS TO BE TOP DRESSED WITH 100mm TOPSOIL AND SEEDED AS SPECIFIED

01

COUNCIL STANDARD PASSIVE STREET TREE IRRIGATION GRAVEL TRENCH DETAIL (BY CIVIL)

Scale: NTS



02

TYPICAL TREE PLANTING DETAIL

Scale: 1:20 @ A1

All advanced trees to be healthy well-grown specimens free of pests and diseases. Water trees prior to planting.

Stake all trees with 3 No. 50x50x2100mm chisel-pointed hardwood stakes driven 300mm into the ground. Tie trees immediately after planting with flexible rubber or canvas ties in 'figure 8' configuration. Secure ties to stakes by wrapping around stakes and nailing with galvanised nails. NOTE- Stakes are to be painted black.

Place top of rootball flush with finished level of planting hole. Gently tease outer root system avoiding major disturbance of plant. Form a watering saucer around immediate crown of plant to hold at least 35 litres of water. Spread a 100mm layer of approved mulch to saucer. Mulch to be kept 100mm away from trunk.

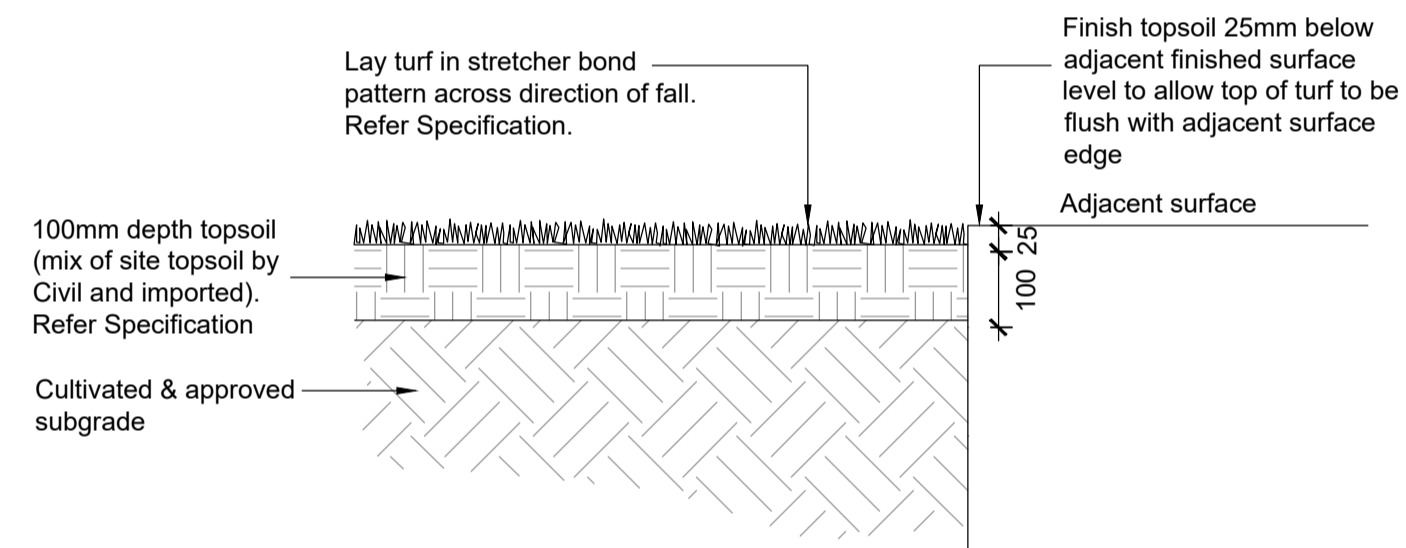
Apply approved fertiliser at rates as per specification. Avoid direct root contact with fertiliser.

Over excavate hole by at least twice the width of the rootball. Ensure sides of hole are roughened. Depth of planting hole no deeper than the height of the root ball. Break / crack soil at base of hole. Backfill hole with approved soil.

03

TYPICAL TURF DETAIL

Scale: 1:10 @ A1



100mm depth topsoil (mix of site topsoil by Civil and imported). Refer Specification

Cultivated & approved subgrade

Lay turf in stretcher bond pattern across direction of fall. Refer Specification.

Finish topsoil 25mm below adjacent finished surface level to allow top of turf to be flush with adjacent surface edge

CITY OF MELTON  
ENGINEERING PLANS  
(LANDSCAPE)  
**APPROVED**  
E. Wright  
16 Jun 2022  
CITY DESIGN DATE

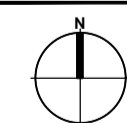
**FOR TOWN PLANNING  
NOT FOR CONSTRUCTION**

Rev	Date	Description
-	07.06.2022	Issued to Council

451 BEATTYS DEVELOPMENT PTY LTD

**BOTANIA RESIDENTIAL SUBDIVISION**  
1152-1174 TAYLORS ROAD & 451-471 BEATTYS ROAD, PLUMPTON

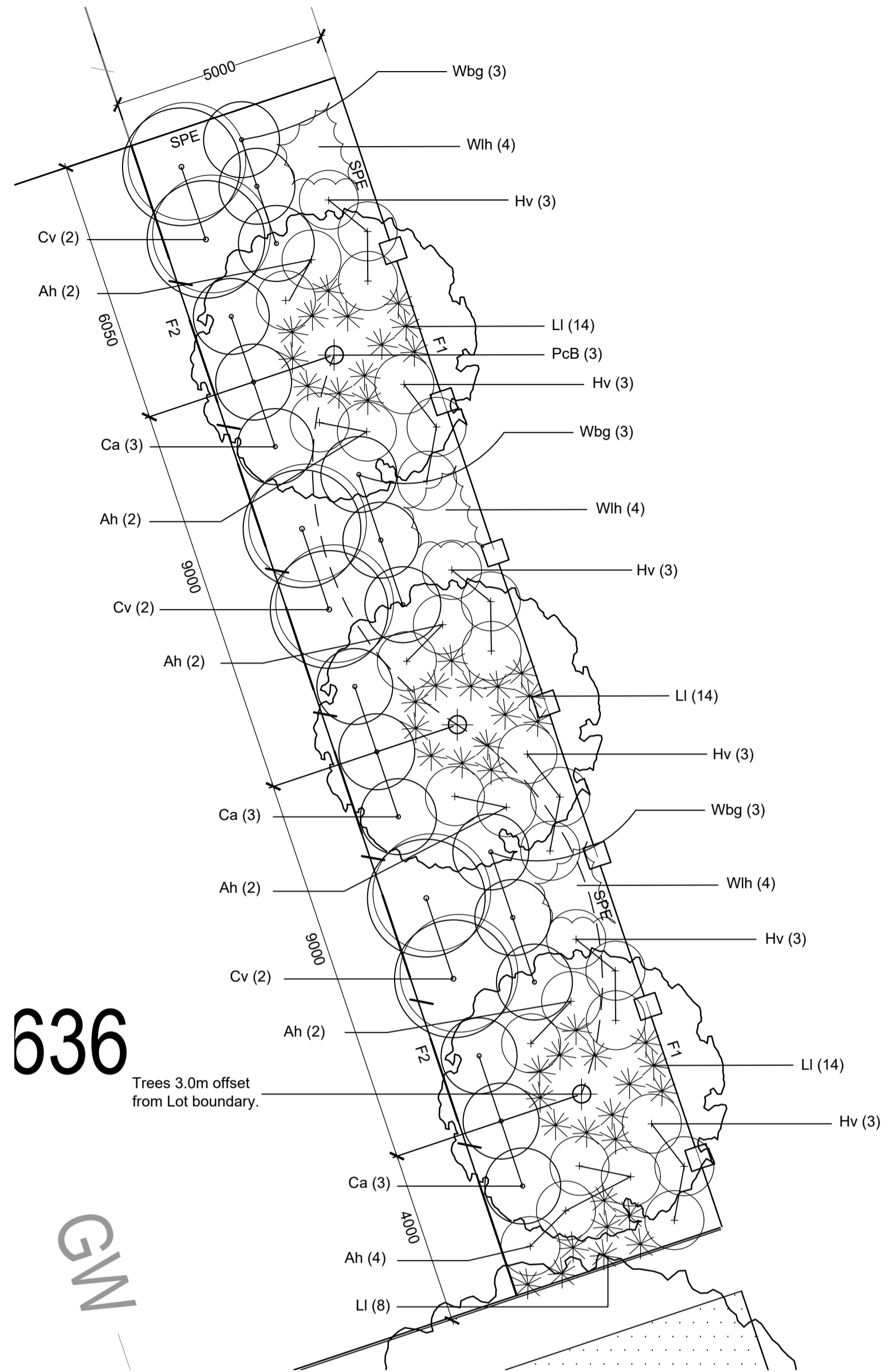
**STAGE 6A DESIGN DEVELOPMENT  
LANDSCAPE STREETSCAPE DETAILS**



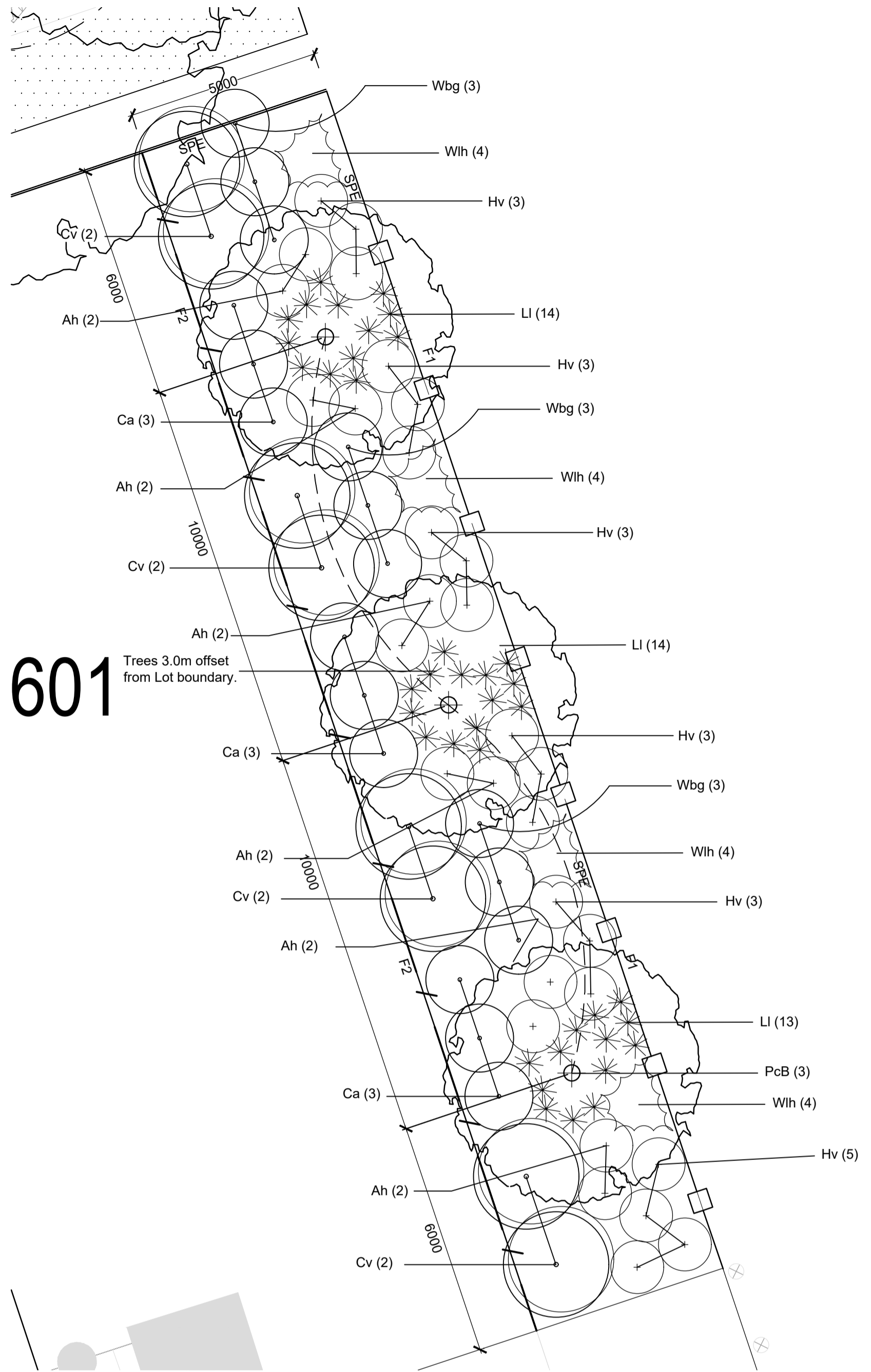
Scale: as shown @ A1 size

CDA Design Group Pty Ltd  
Landscape Architecture  
Urban Design  
185 Faraday Street  
Carlton Victoria 3053  
T 03 9349 5866  
F 03 9349 5877  
E office@cdaesigngroup.com.au  
Project No. 19029\_6A  
Date: MAY 2022  
Drawn by: KH  
Checked: TV  
Drawing No. L02

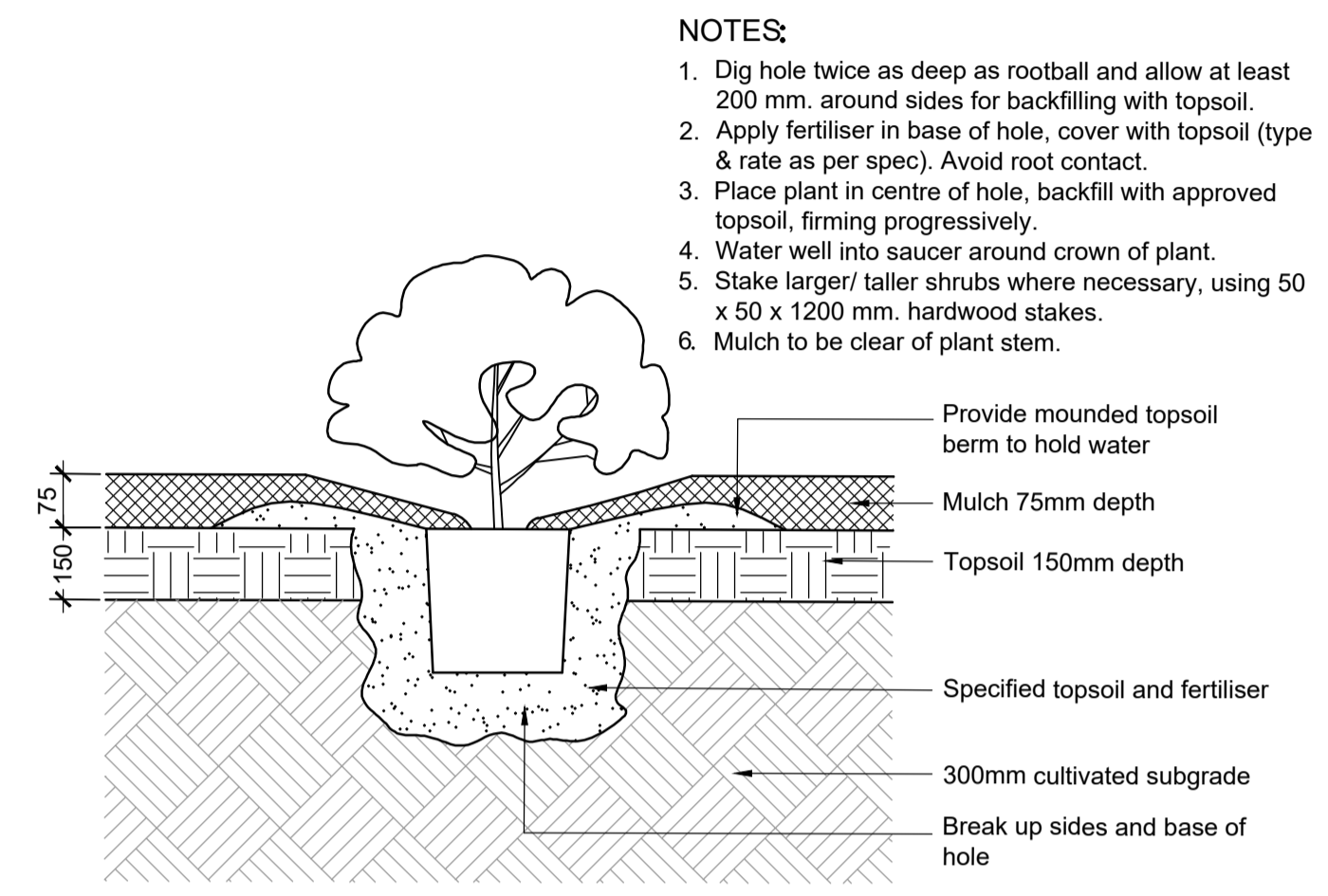




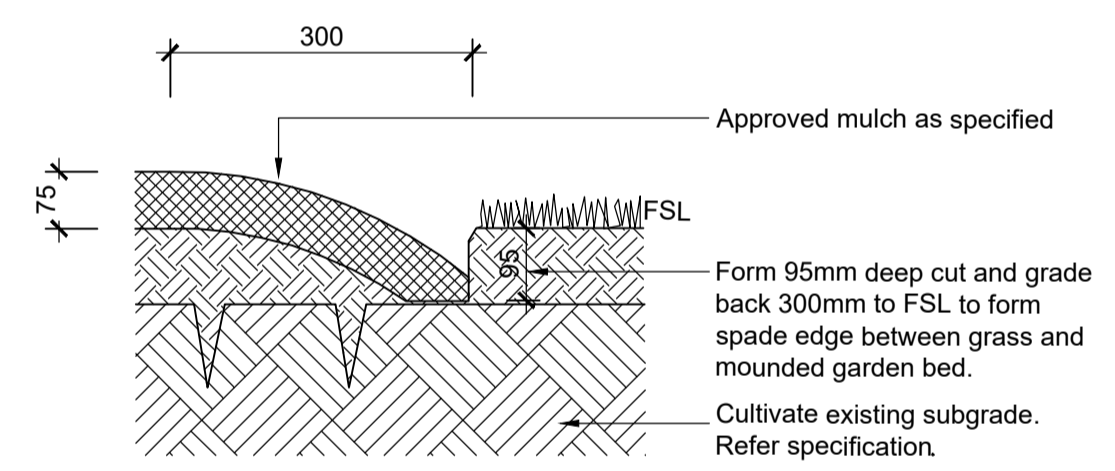
**01 LOT 636 TREE RESERVE PLANTING PLAN**  
Scale: 1:100 @ A1



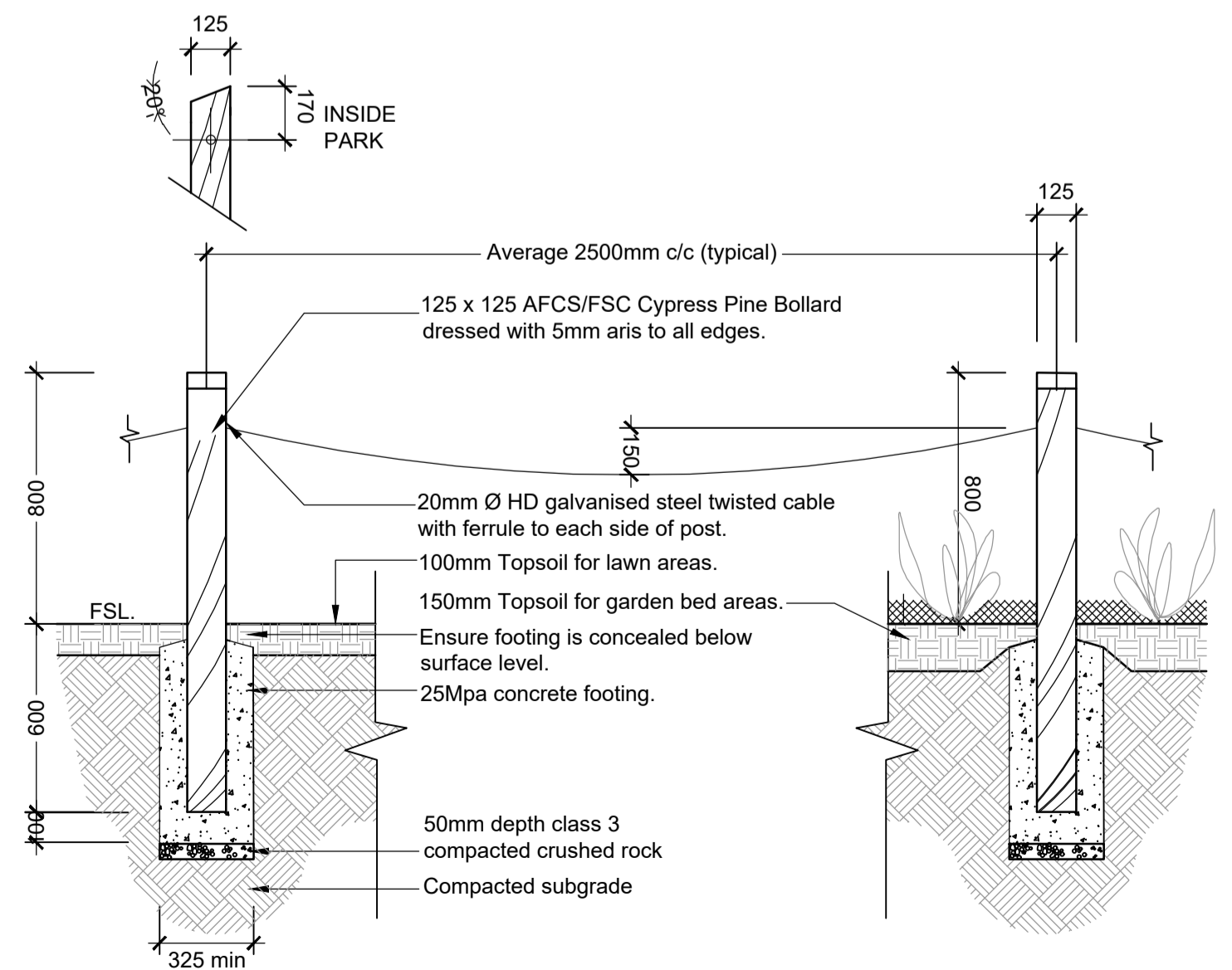
**02 LOT 601 TREE RESERVE PLANTING PLAN**  
Scale: 1:100 @ A1



**03 TYPICAL SHRUB PLANTING DETAIL**  
Scale: 1:10 @ A1



**04 TYPICAL SPADE EDGE DETAIL**  
Scale: 1:10 @ A1

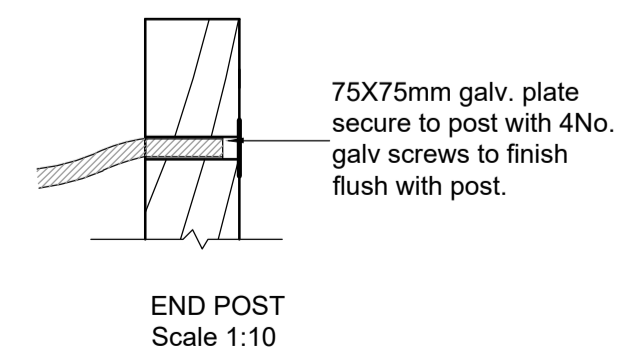
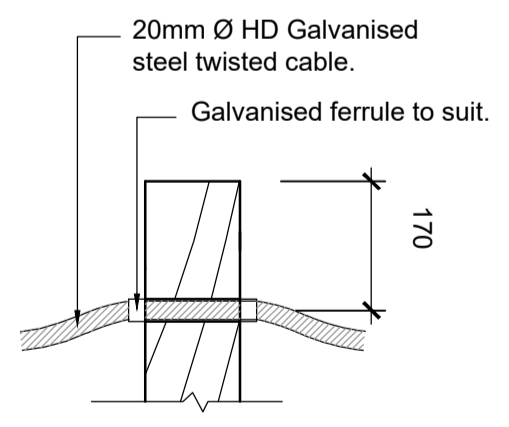


**05 BOLLARD & CABLE FENCE DETAIL**  
Scale: 1:20 @ A1

**FIXINGS:**  
All fixings and cables are to be hot dip galvanised to ensure corrosion resistance. All site cuts to cables shall be appropriately treated with a zinc rich, cold galvanised paint.

**SETOUT & OPENINGS:**  
Refer landscape plan. Setout to be approved on site by the Superintendent & Council prior to installation.  
Refer Melton Standard Detail MCCLA405 for variations to setout tolerances.  
Typically openings at pedestrian points locations to be 1200min and 1500max.  
Cable span between posts 2000min to 2500mm max.  
Bollard fencing to be located 1200mm off BOK and 1000mm alongside pedestrian paths unless otherwise noted on the landscape plans.

**NOTE:**  
Openings centered to trees along Moonflower Drive and Zelkova Circuit to be 3m (tree positioned at 1.5m)



**PLANT SCHEDULE (FOR TREE RESERVE)**

KEY	BOTANICAL NAME	COMMON NAME	MATURE HEIGHT & SPREAD (m)	INSTALLED POT SIZE	INSTALLED HEIGHT (min)	QTY
<b>TREES</b>						
PcB	<i>Pyrus calleryana</i> x <i>Pyrus betulaefolia</i>	Edgedell Edgewood	6 x 4	45L/30mm cal.	2.0m	6
<b>SHRUBS</b>						
Ah	<i>Acacia howittii</i> 'Honey Bun'	Dwarf Sticky Wattle	1-1.2 x 1-1.2	140mm	-	26
Ca	<i>Correa alba</i>	White Correa	1-1.5 x 1-1.5	140mm	-	18
Cv	<i>Callistemon viminalis</i> 'Hannah Ray'	Weeping Bottle Brush	4 x 2	200mm	-	14
Hv	<i>Hardenbergia violacea</i> 'Meema'	Hardenbergia Meema	0.5 x 2	140mm	-	38
Wbg	<i>Westringia</i> 'Blue Gem'	Blue Gem Westringia	1-1.5 x 0.8	140mm	-	18
<b>GROUND COVER</b>						
Wih	<i>Westringia</i> 'Low Horizon'	Prostrate Westringia	0.3 x 0.7	140mm	-	28
<b>TUFTING PLANTS</b>						
LI	<i>Lomandra</i> 'Lime Tuff'	Mat Rush	0.5 x 0.5	140mm	-	77

- LEGEND**
- PROPOSED TREES  
Refer Plant Schedule, specification & Detail 02/L02
  - SPADE EDGING  
Refer Detail 04/L03 and specification. Edging to be removed with removal of sacrificial planting
  - FENCING F1 - BOLLARD & CABLE FENCE  
Refer Detail 05/L03 and specification.
  - FENCING F2 - TIMBER PALING FENCE  
By Civil
  - STAGE BOUNDARY

**CULTIVATION NOTE**  
Cultivation to be approved by the Superintendent prior to Civil placing topsoil.

**DRAWING ACCURACY**  
This drawing has been prepared upon Engineering drawings which may have been superseded. The Contractor is advised to consult with other trades and the Construction Manager should any discrepancies become apparent prior to & during construction.

**SERVICES NOTES**  
Location of all services are to be confirmed on site. Contact 'Dial Before You Dig' & Refer Civil drawings for services key and further detail.

**SETOUT NOTE**  
Setout to be approved on site by the Superintendent prior to commencement of construction works.

**CITY OF MELTON**  
ENGINEERING PLANS  
(LANDSCAPE)  
**APPROVED**  
E. Wright  
16 Jun 2022  
CITY DESIGN DATE

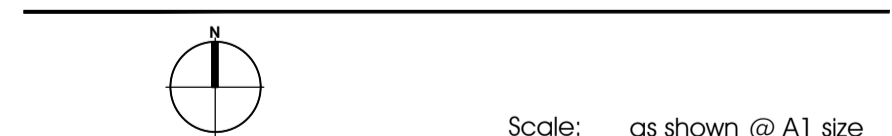
**FOR TOWN PLANNING**  
**NOT FOR CONSTRUCTION**

Rev	Date	Description
-	07.06.2022	Issued to Council

451 BEATYS DEVELOPMENT PTY LTD

**BOTANIA RESIDENTIAL SUBDIVISION**  
1152-1174 TAYLORS ROAD & 451-471 BEATYS ROAD, PLUMPTON

**STAGE 6A DESIGN DEVELOPMENT**  
**TREE RESERVES PLANTING PLANS & DETAILS**



**CDA Design Group Pty Ltd**  
Landscape Architecture  
Urban Design  
185 Faraday Street  
Carlton Victoria 3053  
T 03 9349 5866  
F 03 9349 5877  
E office@cdaesigngroup.com.au

Project No. 19029\_6A  
Date: MAY 2022  
Drawn by: KH  
Checked: TV  
Drawing No. L03