



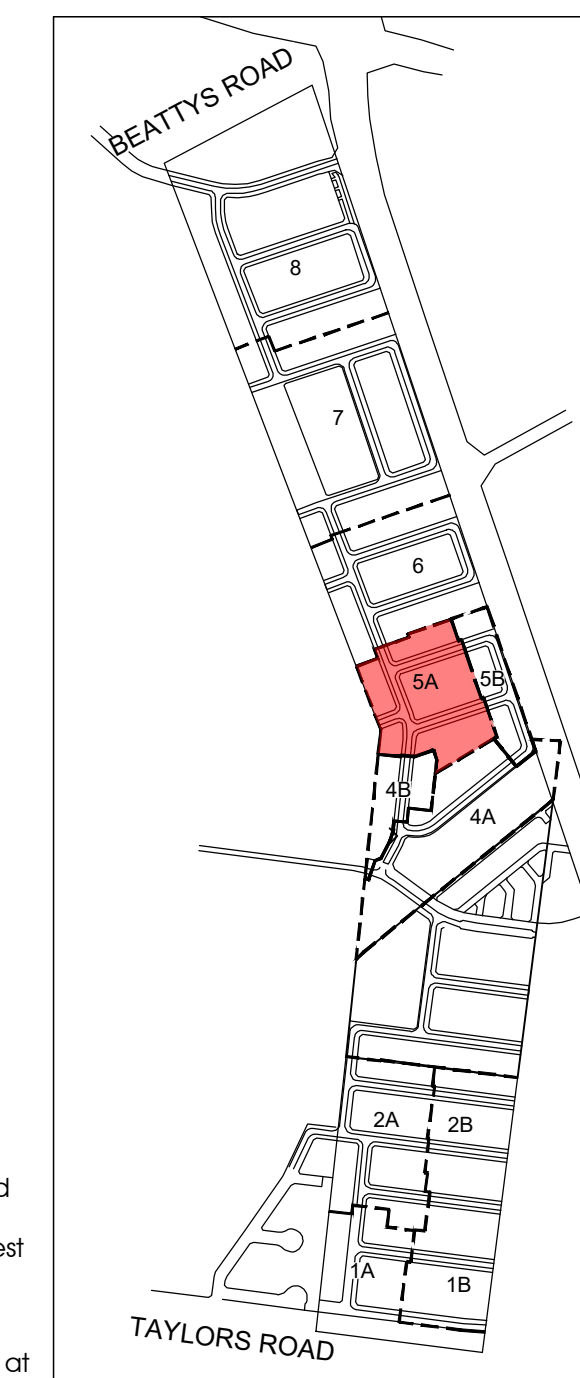
PLANT SCHEDULE

| KEY | BOTANICAL NAME | COMMON NAME | MATURE HEIGHT & SPREAD (m) | INSTALLED POT SIZE | INSTALLED HEIGHT (min) | QTY |
|-----|---|------------------------|----------------------------|--------------------|------------------------|-----|
| Up | <i>Ulmus parvifolia</i> 'Todd' | Chinese Elm | 10 x 9 | 45L/35mm cal. | 2.0m | 14 |
| Ce | <i>Corymbia eximia</i> 'Nana' | Dwarf Yellow Bloodwood | 10 x 7 | 45L/30mm cal. | 2.0m | 18 |
| Em | <i>Eucalyptus mannifera</i> 'Little Spotty' | Dwarf Brittle Gum | 8 x 6 | 45L/30mm cal. | 2.0m | 13 |

REVISION HISTORY:

- REV A**
Trees to Marigold street turned on. Missing on drawing.
- REV B**
Lot 540 - Tree and passive irrigation (PI) added
Lot 545 - PI location updated
Lot 511 - PI removed as per Powerplant request
Lot 507 - Tree and corresponding PI shifted
- REV C**
Future potential street trees on Marigold Drive at front of Lot 609 & 610 shown

KEY PLAN (INDICATIVE STAGING PLAN)
NOT TO SCALE



LEGEND

- PROPOSED TREES
Refer Plant Schedule, specification & Detail 01 & 02.
- PROPOSED TREE WITH REDUCED OFFSET TO SERVICES
Modified passive irrigation required. Tree installation to be confirmed on site with Council representative.
Note: zone indicated represents 2.5m radius from the centre of the tree
- PROPOSED TREES TO FUTURE STAGES
To be submitted with Stage 6A plans
- GRASSING
Refer Specification
- STAGE BOUNDARY

CULTIVATION NOTE

Cultivation to be approved by the Superintendent prior to Civil placing topsoil.

DRAWING ACCURACY

This drawing has been prepared upon Engineering drawings which may have been superseded. The Contractor is advised to consult with other trades and the Construction Manager should any discrepancies become apparent prior to & during construction.

SERVICES NOTES

Location of all services are to be confirmed on site. Contact 'Dial Before You Dig' & Refer Civil drawings for services key and further detail.

SETOUT NOTE

Setout to be approved on site by the Superintendent prior to commencement of construction works.

TREE SETOUT GUIDELINES

- Street trees are to be positioned on site generally in accordance with the following offsets, where possible:
 - Pedestrian pathways 1.2m
 - Driveways 2.5m
 - Side entry pits or standard pits 2m
 - Service crossings 2.5m
 - Fire plugs 2.5m
 - Domestic service tapping points 2.5m
 - Stormwater outlet points 2.5m
 - Intersections 10m (or following splay of the Lot)
 - Electrical infrastructure 2.5
 - Light poles 3m
- Proposed trees may require removal / relocation to allow for services, crossovers and lighting.
- Nature strip trees are to be located mid-way between front of path and back of kerb (except where indicated otherwise on the drawing). Where a footpath is not provided, trees are to be placed as though a footpath existed.
- Trees are not to be placed directly above services.
- Final setout of trees to be confirmed on site by the Superintendent & Council prior to installation.

CITY OF MELTON
ENGINEERING PLANS
(LANDSCAPE)
APPROVED
E. Wright 22 Mar 2022
CITY DESIGN DATE

NOT FOR CONSTRUCTION
FOR TOWN PLANNING PURPOSES ONLY

| | | |
|-----|------------|------------------------------------|
| C | 22.03.2022 | Council Resubmission |
| B | 02.03.2022 | Council Resubmission |
| A | 22.02.2022 | Council Resubmission |
| - | 07.02.2022 | Council Submission |
| P5 | 03.02.2022 | Design Review |
| P4 | 12.01.2022 | Design Review |
| P3 | 22.12.2021 | For Coordination of tree placement |
| P2 | 08.12.2021 | For Coordination of services |
| P1 | 19.11.2021 | For Coordination of services |
| Rev | Date | Description |

GROWLAND PTY LTD

BOTANIA RESIDENTIAL SUBDIVISION
1152-1174 TAYLORS ROAD & 451-471 BEATTYS ROAD, PLUMPTON

STAGE 5A LANDSCAPE STREETScape PLAN

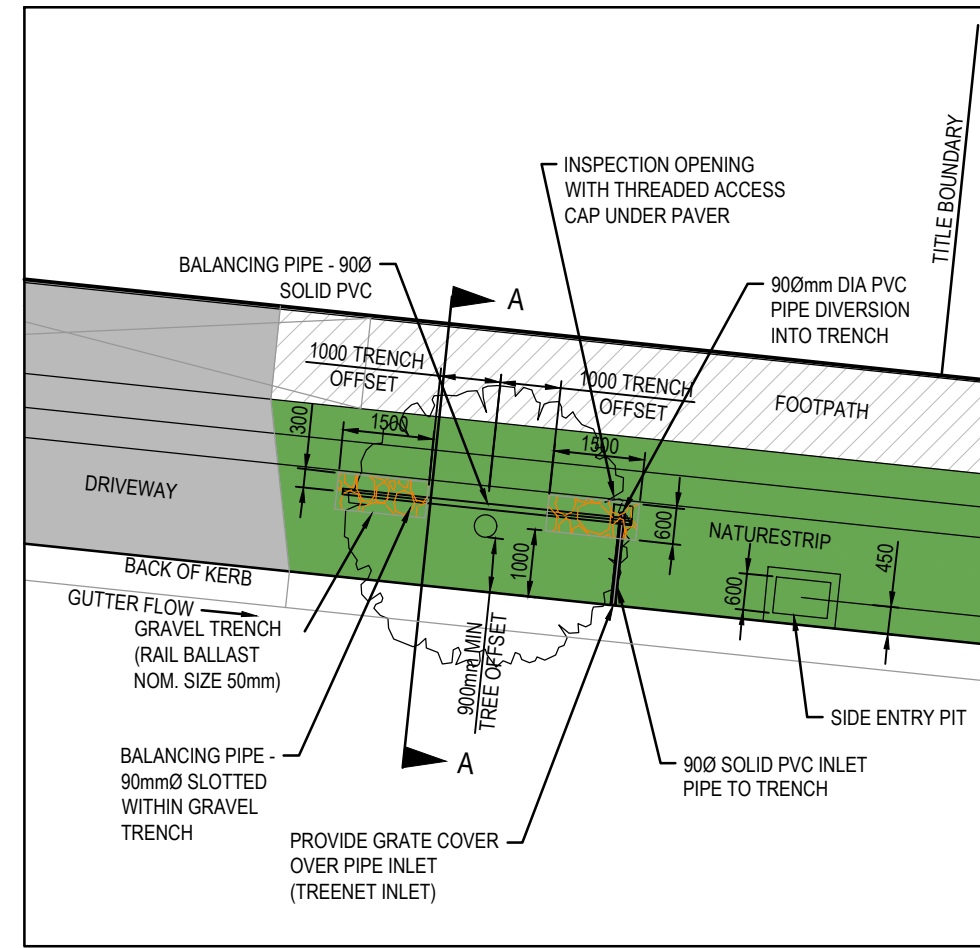


CDA Design Group Pty Ltd
Landscape Architecture
Urban Design
185 Faraday Street
Carlton Victoria 3053
T 03 9349 5866
F 03 9349 5877
E office@cdaesigngroup.com.au

Project No. 19029
Date: NOV 2021
Drawn by: ET
Checked: TV

Drawing No. L01_C

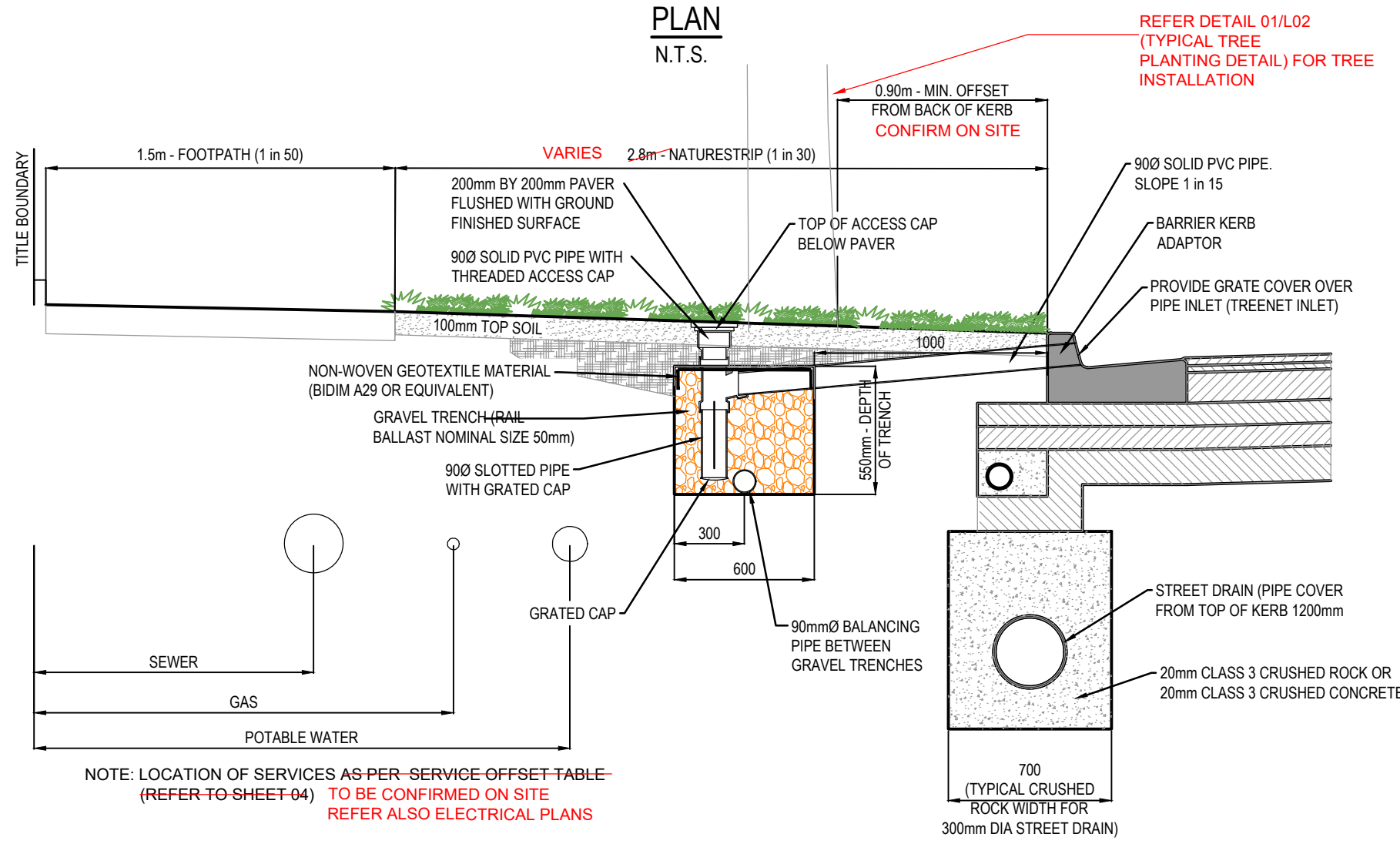




NOTE
 CIVIL TO INSTALL INLET PIPE NOMINALLY 300MM ABOVE FSL. LANDSCAPE CONTRACTOR TO ALLOW TO CUT INLET PIPE DOWN, RECAP AND POSITION PAVER TO FINISH FLUSH WITH FSL OF NATURE STRIP.

PASSIVE STREET TREE IRRIGATION GRAVEL TRENCH (KERB INLET DIVERSION)

PLAN
 N.T.S.

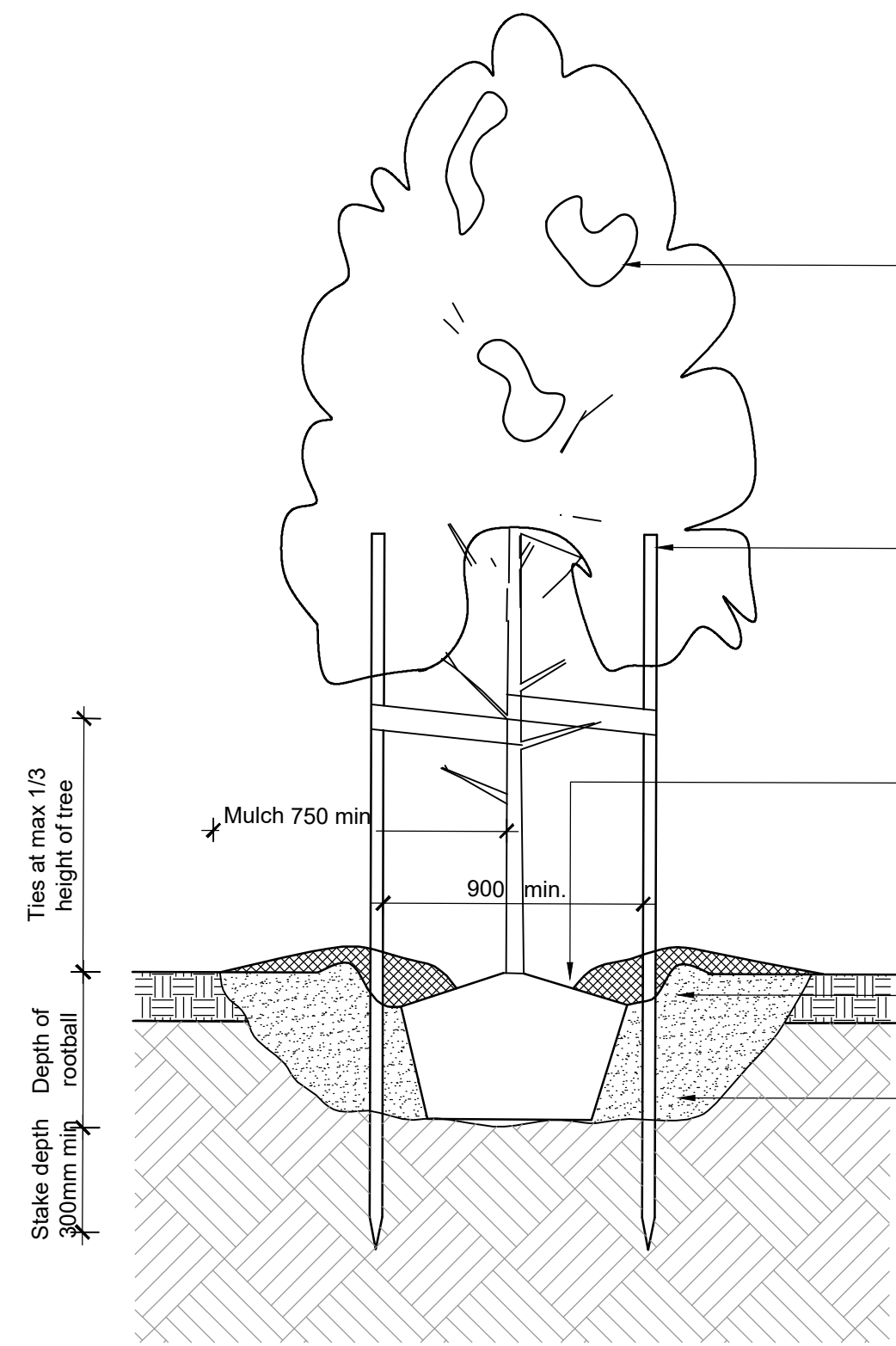


PASSIVE STREET TREE IRRIGATION GRAVEL TRENCH (KERB INLET DIVERSION) CROSS SECTION A-A
 N.T.S.

| NATURESTRIP WIDTH (m) | GRAVEL TRENCH OFFSET FROM BACK OF KERB (mm) |
|-----------------------|---|
| ≤ 2.50 | 700 |
| 2.80 | 800 |
| ≥ 4.35 | 1000 |

GENERAL NOTES
 1. AT HIGHLY CONSTRAINED SITES, GRAVEL TRENCHES CAN BE MODIFIED IN THE FOLLOWING WAYS:
 - REDUCED OFFSET OF 0.75m FROM TREE CENTRELINE
 - DIMENSION 1.0m LONG x 0.6m WIDE x 0.75m DEEP
 - NATURESTRIP: ≤ 2.5m DIMENSION CAN BE 1.5m LONG x 0.4m WIDE x 0.75m DEEP

NOTES:
 1. FOR PASSIVE STREET TREE IRRIGATION DETAIL REFER TO MELTON CITY COUNCIL STANDARD DRAWING: PASSIVE STREET TREE IRRIGATION GRAVEL TRENCH (KERB INLET DIVERSION)
 2. PASSIVE IRRIGATION PIPES AND FITTINGS TO BE 690mm PVC SEWER CLASS
 3. ALL PVC JOINTS TO BE SEALED WITH SOLVENT CEMENT
 4. ALL GRASSED AREAS TO BE TOP DRESSED WITH 100mm TOPSOIL AND SEEDED AS SPECIFIED



02 TYPICAL TREE PLANTING DETAIL
 Scale: 1:20 @ A1

All advanced trees to be healthy well-grown specimens free of pests and diseases. Water trees prior to planting.

Stake all trees with 3 No. 50x50x2100mm chisel-pointed hardwood stakes driven 300mm into the ground. Tie trees immediately after planting with flexible rubber or canvas ties in 'figure 8' configuration. Secure ties to stakes by wrapping around stakes and nailing with galvanised nails.
 NOTE- Stakes are to be painted black.

Place top of rootball flush with finished level of planting hole. Gently tease outer root system avoiding major disturbance of plant. Form a watering saucer around immediate crown of plant to hold at least 35 litres of water. Spread a 100mm layer of approved mulch to saucer. Mulch to be kept 100mm away from trunk.

Apply approved fertiliser at rates as per specification. Avoid direct root contact with fertiliser.

Over excavate hole by at least twice the width of the rootball. Ensure sides of hole are roughened. Depth of planting hole no deeper than the height of the root ball. Break / crack soil at base of hole. Backfill hole with approved soil.

01 COUNCIL STANDARD PASSIVE STREET TREE IRRIGATION GRAVEL TRENCH DETAIL (BY CIVIL)
 Scale: NTS

CITY OF MELTON
 ENGINEERING PLANS
 (LANDSCAPE)
 APPROVED
E. Wright 22 Mar 2022
 CITY DESIGN DATE

NOT FOR CONSTRUCTION
 FOR TOWN PLANNING PURPOSES ONLY

| Rev | Date | Description |
|-----|------------|--|
| - | 22.03.2022 | Council Submission - Reissue only, no revision |
| - | 02.03.2022 | Council Submission - Reissue only, no revision |
| - | 22.02.2022 | Council Submission |
| - | 07.02.2022 | Council Submission |
| P1 | 12.01.2022 | Design Review |

GROWLAND PTY LTD

BOTANIA RESIDENTIAL SUBDIVISION
 1152-1174 TAYLORS ROAD & 451-471 BEATTYS ROAD, PLUMPTON

STAGE 5A LANDSCAPE DETAILS

Scale: Varies @ A1 size

CDA Design Group Pty Ltd
 Landscape Architecture
 Urban Design
 185 Faraday Street
 Carlton Victoria 3053
 T 03 9349 5866
 F 03 9349 5877
 E office@cdaesigngroup.com.au

Project No. 19029
 Date: NOV 2021
 Drawn by: NC
 Checked: NC
 Drawing No. L02