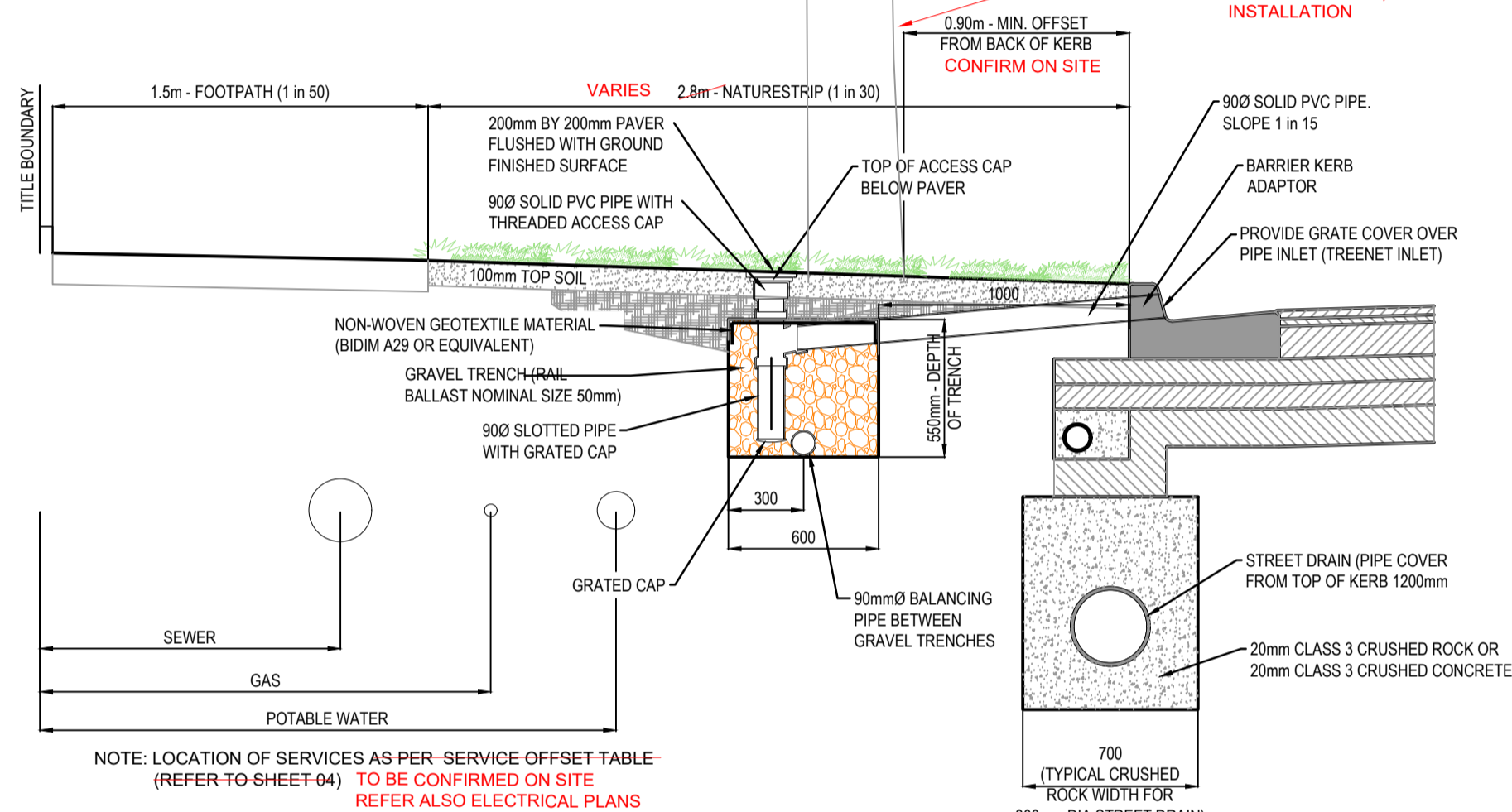


PASSIVE STREET TREE IRRIGATION GRAVEL TRENCH (KERB INLET DIVERSION) PLAN N.T.S.



PASSIVE STREET TREE IRRIGATION GRAVEL TRENCH (KERB INLET DIVERSION) CROSS SECTION A-A N.T.S.

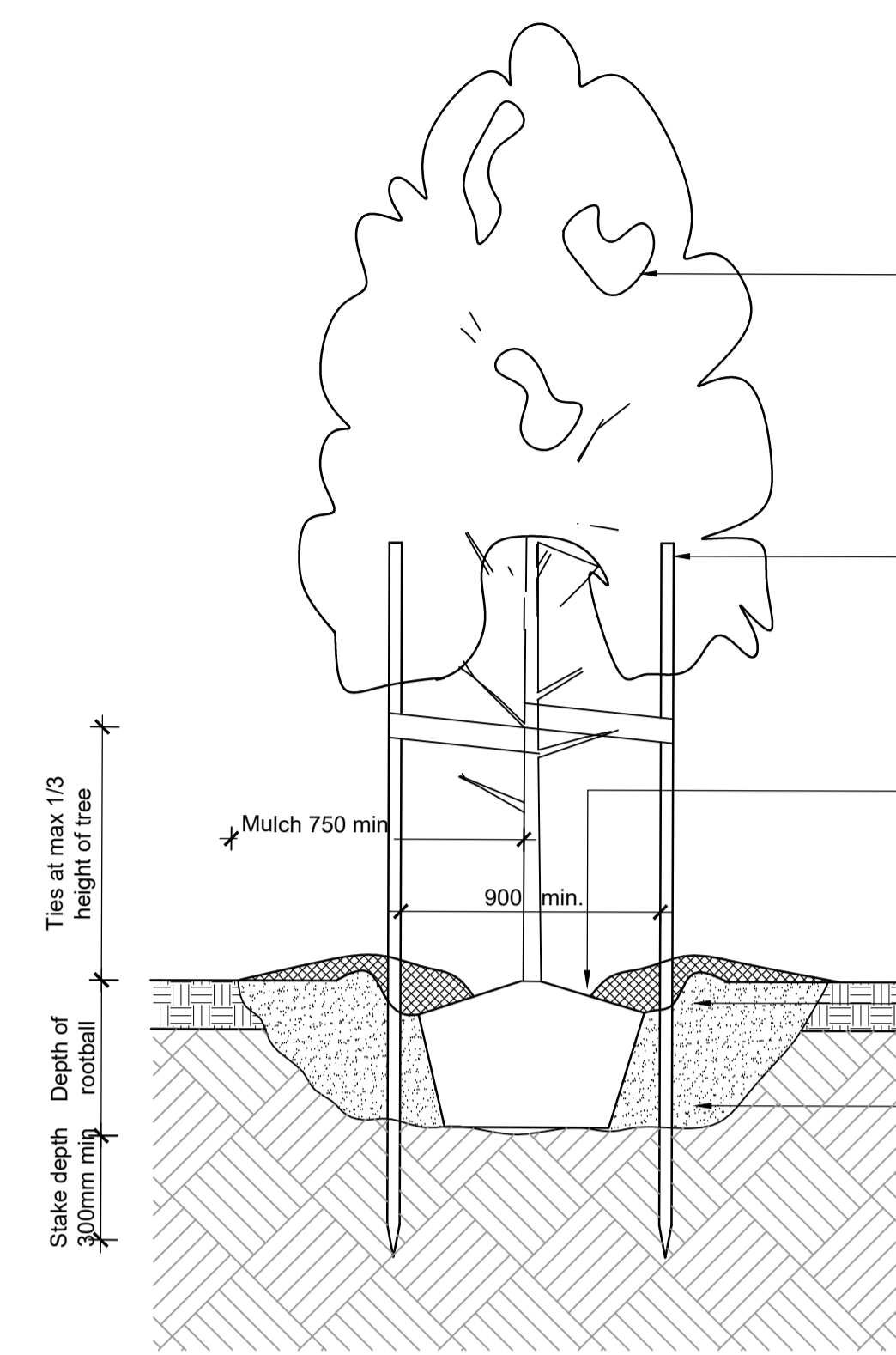
NATURESTRIP WIDTH (m)	GRAVEL TRENCH OFFSET FROM BACK OF KERB (mm)
≤ 2.50	700
2.80	800
≥ 4.35	1000

GENERAL NOTES

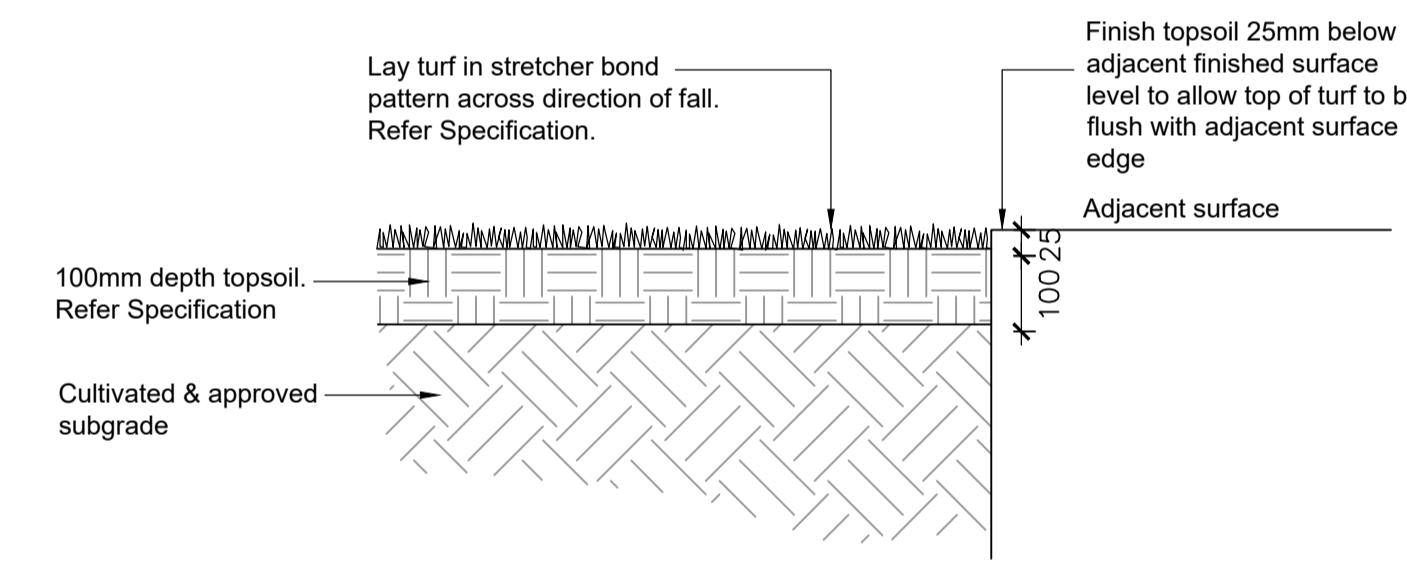
- AT HIGHLY CONSTRAINED SITES, GRAVEL TRENCHES CAN BE MODIFIED IN THE FOLLOWING WAYS:
 - REDUCED OFFSET OF 0.75m FROM TREE CENTRELINE
 - DIMENSION 1.0m LONG x 0.6m WIDE x 0.75m DEEP
 - NATURESTRIP: ≤ 2.5m DIMENSION CAN BE 1.5m LONG x 0.4m WIDE x 0.75m DEEP

NOTES:

- FOR PASSIVE STREET TREE IRRIGATION DETAIL REFER TO MELTON CITY COUNCIL STANDARD DRAWING: PASSIVE STREET TREE IRRIGATION GRAVEL TRENCH (KERB INLET DIVERSION)
- PASSIVE IRRIGATION PIPES AND FITTINGS TO BE 600mm PVC SEWER CLASS
- ALL PVC JOINTS TO BE SEALED WITH SOLVENT CEMENT
- ALL GRASSED AREAS TO BE TOP DRESSED WITH 100mm TOPSOIL AND SEEDED AS SPECIFIED



02 TYPICAL TREE PLANTING DETAIL Scale: 1:20@A1



03 TYPICAL TURF DETAIL Scale: 1:10@A1

PLANT SCHEDULE

KEY	BOTANICAL NAME	COMMON NAME	MATURE HEIGHT & SPREAD (m)	INSTALLED POT SIZE	INSTALLED HEIGHT (min)	QTY
Cm	<i>Corymbia maculata</i> 'Gamai'	Spotted Gum	20 x 10 (+)	45L/30mm cal.	2.0-2.4m	1
Up	<i>Ulmus parvifolia</i> 'Todd'	Chinese Elm	10 x 9	45L/35mm cal.	2.0m	11

(+) New cultivar by Flemings. Unconfirmed height by spread. Dimensions nominated are based on *Corymbia maculata*

LEGEND

- PROPOSED TREES: Refer Plant Schedule, specification & Detail 01 & 02.
- PROPOSED TREE: Tree supplied and installed with adjoining stage of works.
- GRASSING: Refer Specification
- GRASSING - INSTANT TURF: Refer Specification and Detail 03
- STAGE BOUNDARY

CULTIVATION NOTE

Cultivation to be approved by the Superintendent prior to Civil placing topsoil.

DRAWING ACCURACY

This drawing has been prepared upon Engineering drawings which may have been superseded. The Contractor is advised to consult with other trades and the Construction Manager should any discrepancies become apparent prior to & during construction.

SERVICES NOTES

Location of all services are to be confirmed on site. Contact 'Dial Before You Dig' & Refer Civil drawings for services key and further detail.

SETOUT NOTE

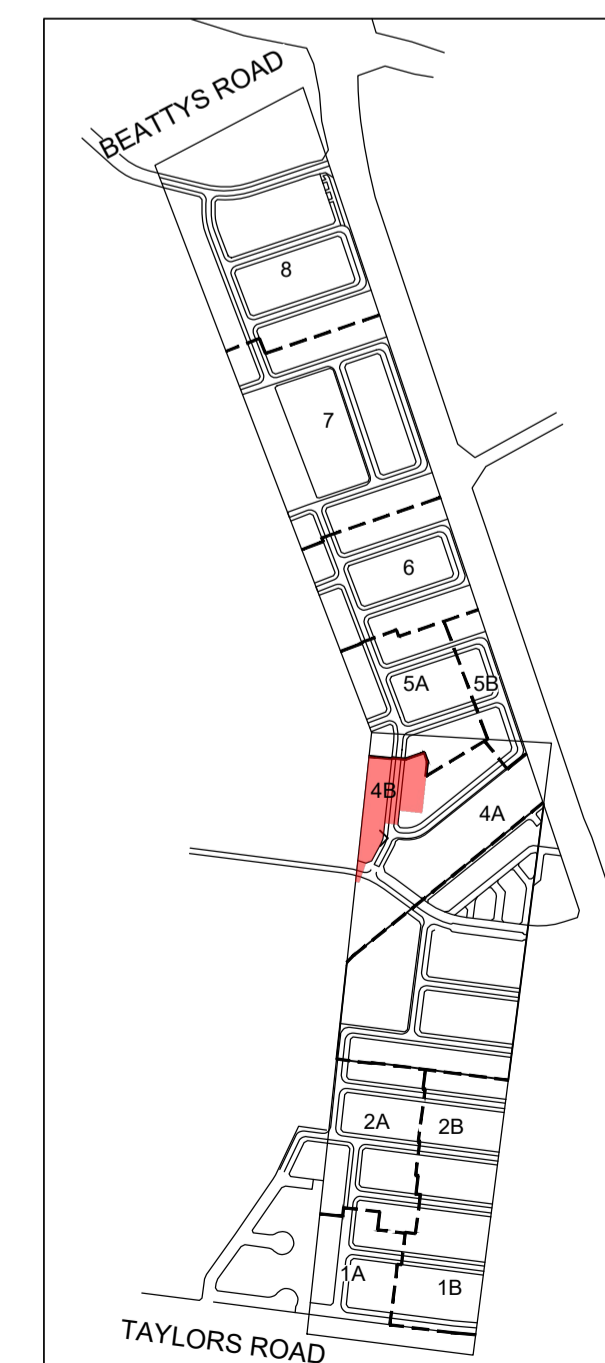
Setout to be approved on site by the Superintendent prior to commencement of construction works.

01 COUNCIL STANDARD PASSIVE STREET TREE IRRIGATION GRAVEL TRENCH DETAIL (BY CIVIL)

Scale: NTS

TREE SETOUT GUIDELINES

- Street trees are to be positioned on site generally in accordance with the following offsets, where possible:
 - Pedestrian pathways: 1.2m
 - Driveways: 2.5m
 - Side entry pits or standard pits: 2m
 - Service crossings: 2.5m
 - Fire plugs: 2.5m
 - Domestic service tapping points: 2.5m
 - Stormwater outlet points: 2.5m
 - Intersections: 10m (or following splay of the Lot)
 - Electrical infrastructure: 2.5
 - Light poles: 3m
- Proposed trees may require removal / relocation to allow for services, crossovers and lighting.
- Nature strip trees are to be located mid-way between front of path and back of kerb (except where indicated otherwise on the drawing). Where a footpath is not provided, trees are to be placed as though a footpath existed.
- Trees are not to be placed directly above services.
- Final setout of trees to be confirmed on site by the Superintendent & Council prior to installation.



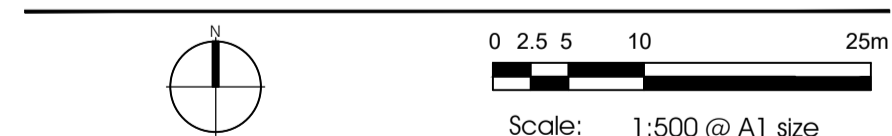
KEY PLAN (INDICATIVE STAGING PLAN) NOT TO SCALE

NOT FOR CONSTRUCTION FOR TOWN PLANNING PURPOSES ONLY

Rev	Date	Description
-	12/10/2021	Council submission for endorsement
P3	04/10/2021	For tree coordination - Powerplant
P2	22/09/2021	Client review
P1	04/08/2021	For tree coordination

GROWLAND PTY LTD
BOTANIA RESIDENTIAL SUBDIVISION
1152-1174 TAYLORS ROAD & 451-471 BEATTYS ROAD, PLUMPTON

STAGE 4B LANDSCAPE STREETScape PLAN



CDA Design Group Pty Ltd
Landscape Architecture
Urban Design
185 Faraday Street
Carlton Victoria 3053
T 03 9349 5866
F 03 9349 5877
E office@cdaesigngroup.com.au

Project No. 19029
Date: AUGUST 2021
Drawn by: FG/NC
Checked: NC
Drawing No. L01

CITY OF MELTON
ENGINEERING PLANS
(LANDSCAPE)
APPROVED
E Wright
13/10/2021
CITY DESIGN DATE