

- ### LEGEND
- PROPOSED TREES
Refer Plant Schedule, specification & details on L01 and L02.
 - GARDEN BED PLANTING
Refer plant schedule, specification and Details 03 & 04/L02
 - GARDEN BED PLANTING - SACRIFICIAL
Planting to be removed and reinstated with grass at the removal of the temporary retaining basin unless otherwise agreed to be retained with council
 - PLASTIC EDGING
Refer Detail 05/L02 and specification. Edging to be removed with removal of sacrificial planting
 - GRASSING
Refer Specification
 - GRASSING - INSTANT TURF
Refer Specification and Detail 06/L02
 - STAGE BOUNDARY

CULTIVATION NOTE

Cultivation to be approved by the Superintendent prior to Civil placing topsoil.

DRAWING ACCURACY

This drawing has been prepared upon Engineering drawings which may have been superseded. The Contractor is advised to consult with other trades and the Construction Manager should any discrepancies become apparent prior to & during construction.

SERVICES NOTES

Location of all services are to be confirmed on site. Contact 'Dial Before You Dig' & Refer Civil drawings for services key and further detail.

SETOUT NOTE

Setout to be approved on site by the Superintendent prior to commencement of construction works.

- ### TREE SETOUT GUIDELINES
- Street trees are to be positioned on site generally in accordance with the following offsets, where possible:
 - Pedestrian pathways 1.2m
 - Driveways 2.5m
 - Side entry pits or standard pits 2m
 - Service crossings 2.5m
 - Fire plugs 2.5m
 - Domestic service tapping points 2.5m
 - Stormwater outlet points 2.5m
 - Intersections 10m (or following splay of the Lot)
 - Electrical infrastructure 2.5
 - Light poles 3m
 - Proposed trees may require removal / relocation to allow for services, crossovers and lighting.
 - Nature strip trees are to be located mid-way between front of path and back of kerb (except where indicated otherwise on the drawing). Where a footpath is not provided, trees are to be placed as though a footpath existed.
 - Trees are not to be placed directly above services.
 - Final setout of trees to be confirmed on site by the Superintendent & Council prior to installation.

NOT FOR CONSTRUCTION
FOR TOWN PLANNING PURPOSES ONLY

-	12/10/2021	Council submission
P5	07/10/2021	For client review - new garden beds
P4	01/10/2021	Tree coordination with PowerPlant
P3	22/09/2021	For client review

GROWLAND PTY LTD
 BOTANIA RESIDENTIAL SUBDIVISION
 1152-1174 TAYLORS ROAD & 451-471 BEATTYS ROAD, PLUMPTON

STAGE 4A LANDSCAPE STREETScape PLAN

CITY OF MELTON
 ENGINEERING PLANS
 (LANDSCAPE)
APPROVED
E Wright 13/10/2021
 CITY DESIGN DATE

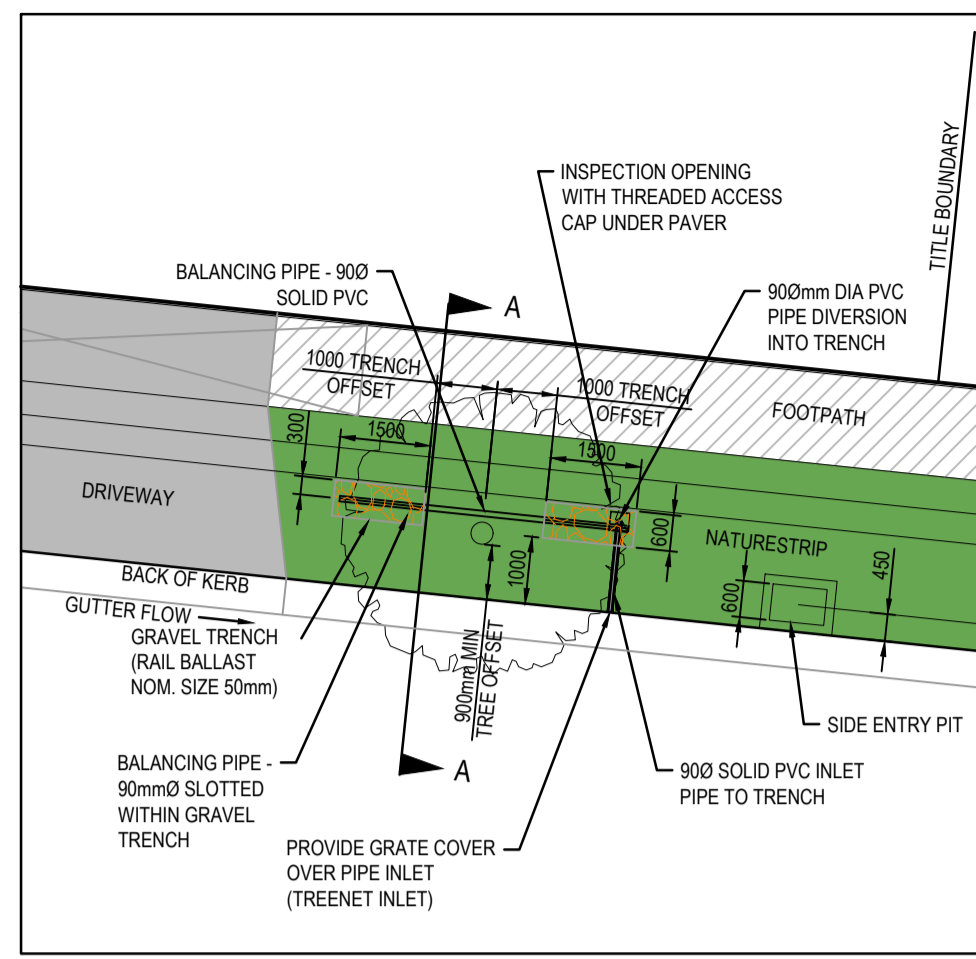
PLANT SCHEDULE

KEY	BOTANICAL NAME	COMMON NAME	MATURE HEIGHT & SPREAD (m)	INSTALLED POT SIZE	INSTALLED HEIGHT (min)	QTY
STREET TREES						
Cm	<i>Corymbia maculata</i> 'Gamai'	Smooth-barked Apple	20 x 10 (+)	45L/30mm cal.	2.0m	11
Ep	<i>Eucalyptus polyanthemos</i>	Red Box	18 x 9	45L/30mm cal.	2.4m	13
Up	<i>Ulmus parvifolia</i> 'Todd'	Chinese Elm	10 x 9	45L/35mm cal.	2.0m	7
SHRUBS/TUFTING & GROUNDCOVERS						
LI	<i>Lomandra longifolia confertifolia</i> 'Lime Tuff'	Lime Tuff Lomandra	0.6x0.6	Tube	-	1321
Ca	<i>Chrysocephalum apiculatum</i>	Common Everlasting	0.15x0.3	Tube	-	82
Eg	<i>Eremophila glabra prostrate</i> Blue Horizon	Eremophila prostrate	.25x1	140	-	194

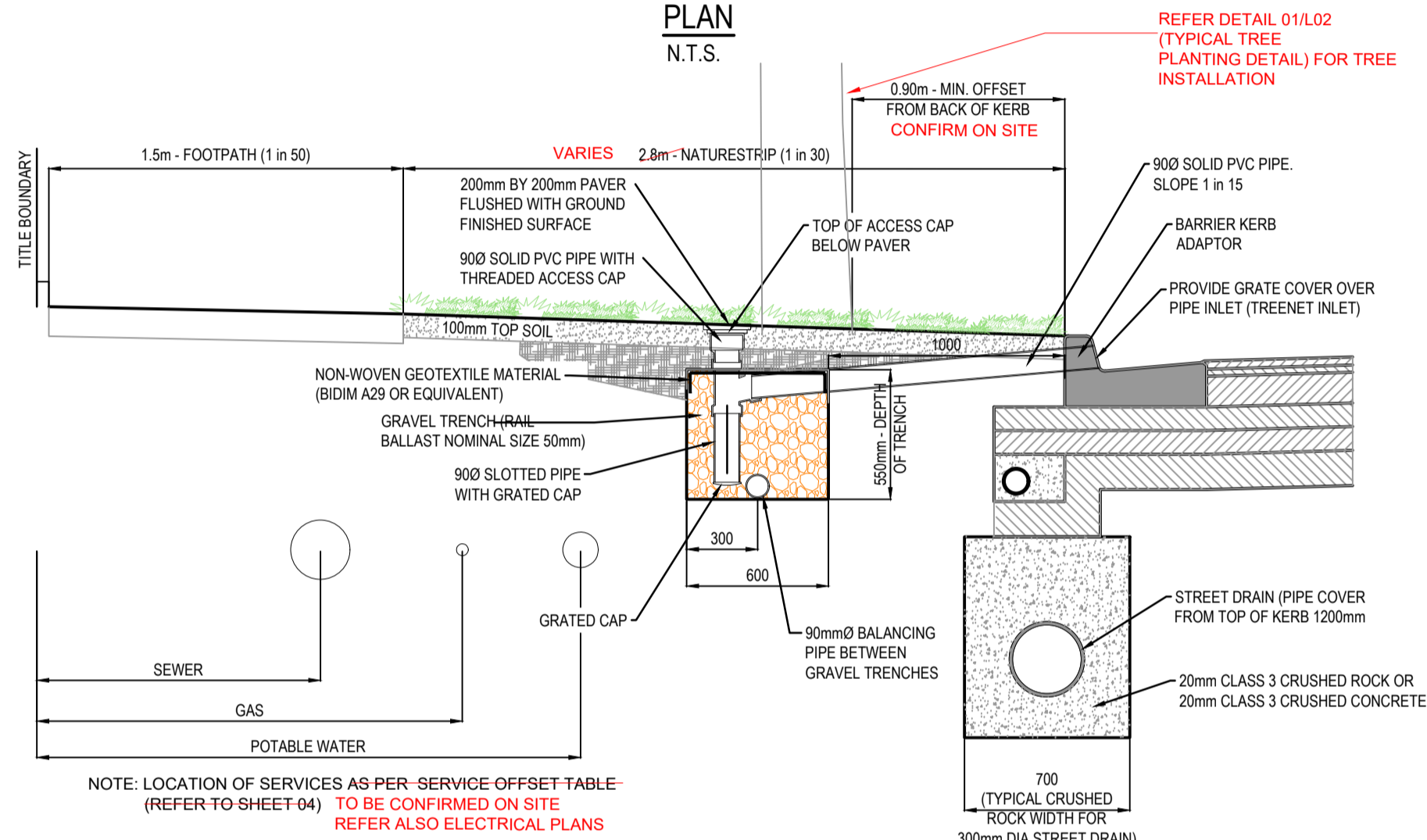
(+) New cultivar by Flemings. Unconfirmed height by spread. Dimensions nominated are based on straight *Corymbia maculata*
 Ca plants to be staked and guarded until established.

01

DETAIL PLAN : GARDEN BED PLANTING
 Scale: 1:250 @ A1



PASSIVE STREET TREE IRRIGATION GRAVEL TRENCH (KERB INLET DIVERSION)
PLAN
N.T.S.



PASSIVE STREET TREE IRRIGATION GRAVEL TRENCH (KERB INLET DIVERSION) CROSS SECTION A-A
N.T.S.

NATURESTRIP WIDTH (m)	GRAVEL TRENCH OFFSET FROM BACK OF KERB (mm)
≤ 2.50	700
2.80	800
≥ 4.35	1000

GENERAL NOTES

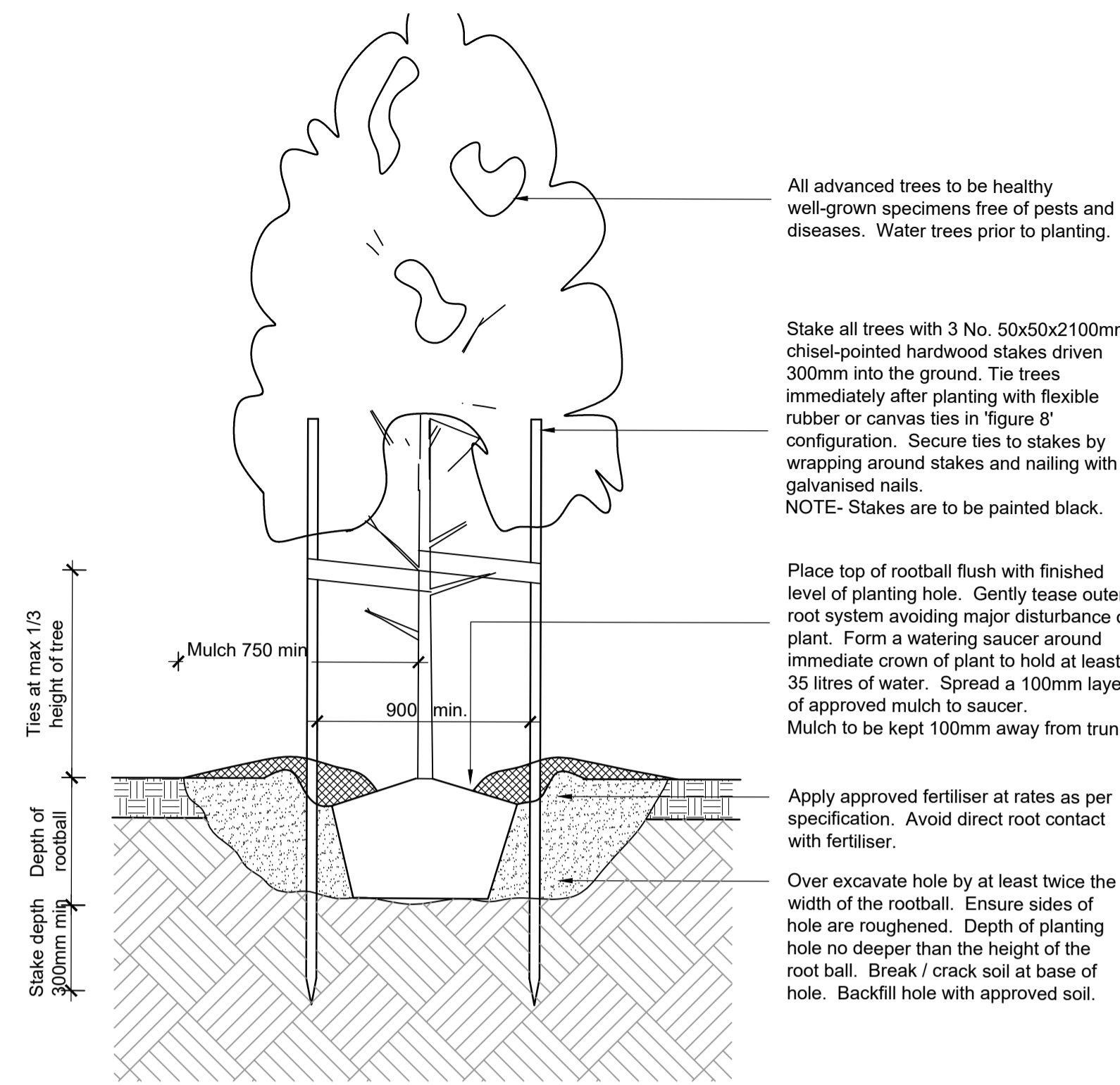
- AT HIGHLY CONSTRAINED SITES, GRAVEL TRENCHES CAN BE MODIFIED IN THE FOLLOWING WAYS:
 - REDUCED OFFSET OF 0.75m FROM TREE CENTRELINE
 - DIMENSION 1.0m LONG x 0.6m WIDE x 0.75m DEEP
 - NATURESTRIP ≤ 2.5m DIMENSION CAN BE 1.5m LONG x 0.4m WIDE x 0.75m DEEP

NOTES:

- FOR PASSIVE STREET TREE IRRIGATION DETAIL REFER TO MELTON CITY COUNCIL STANDARD DRAWING: PASSIVE STREET TREE IRRIGATION GRAVEL TRENCH (KERB INLET DIVERSION)
- PASSIVE IRRIGATION PIPES AND FITTINGS TO BE 90mm PVC SEWER CLASS
- ALL PVC JOINTS TO BE SEALED WITH SOLVENT CEMENT
- ALL GRASSED AREAS TO BE TOP DRESSED WITH 100mm TOPSOIL AND SEEDED AS SPECIFIED

01 COUNCIL STANDARD PASSIVE STREET TREE IRRIGATION GRAVEL TRENCH DETAIL (BY CIVIL)

Scale: NTS

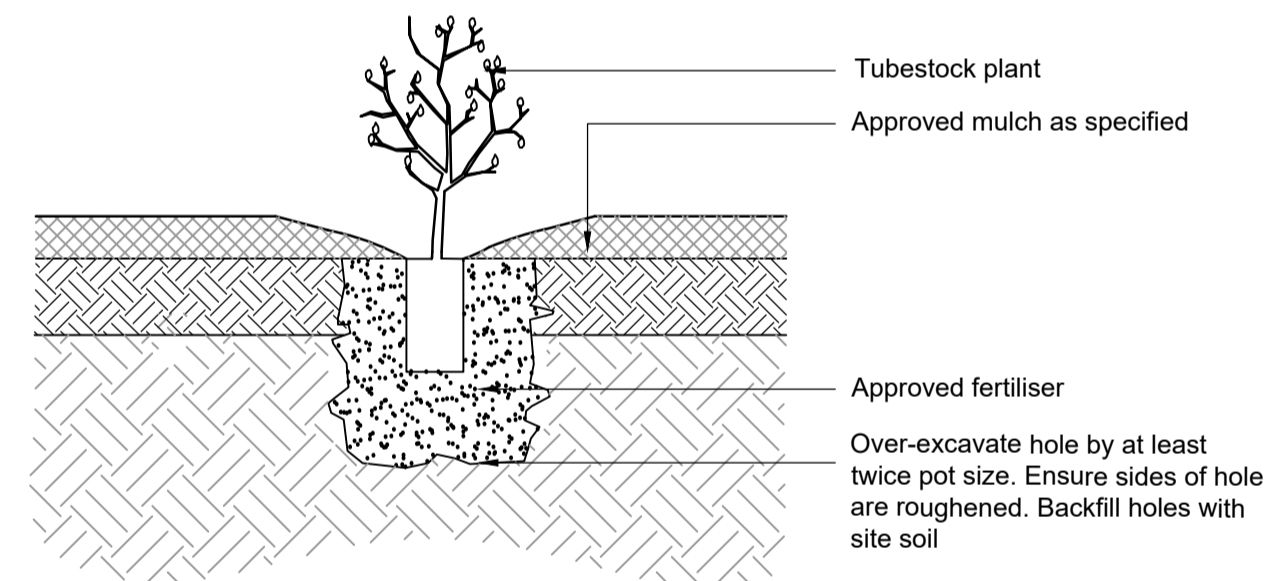


02 TYPICAL TREE PLANTING DETAIL

Scale: 1:20 @ A1

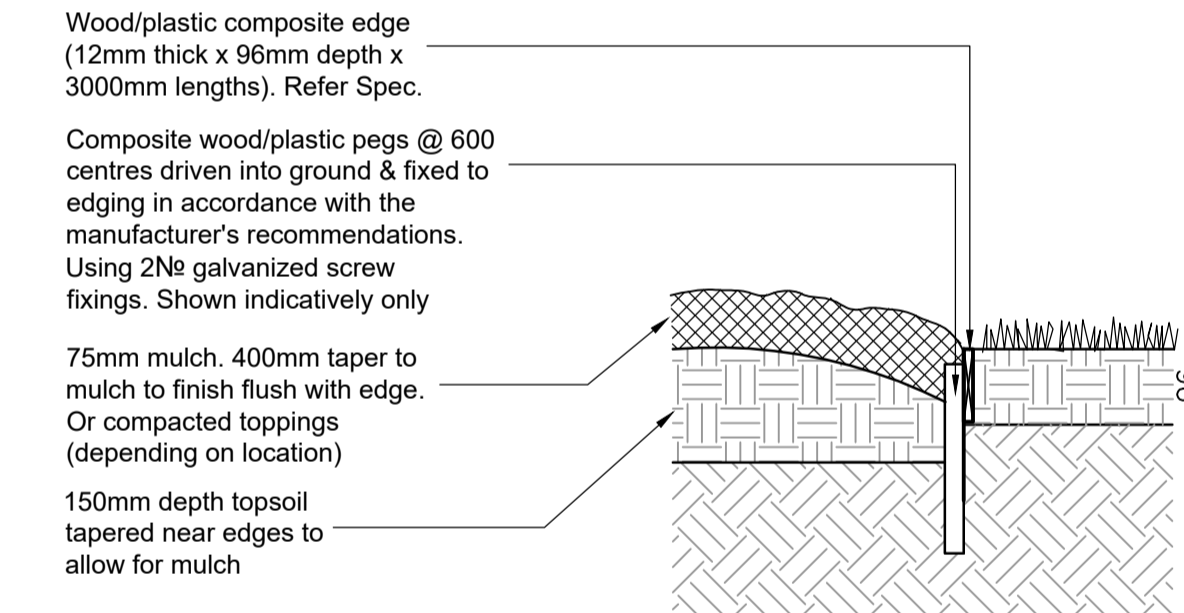
03 TYPICAL SHRUB PLANTING DETAIL

Scale: 1:10 @ A1



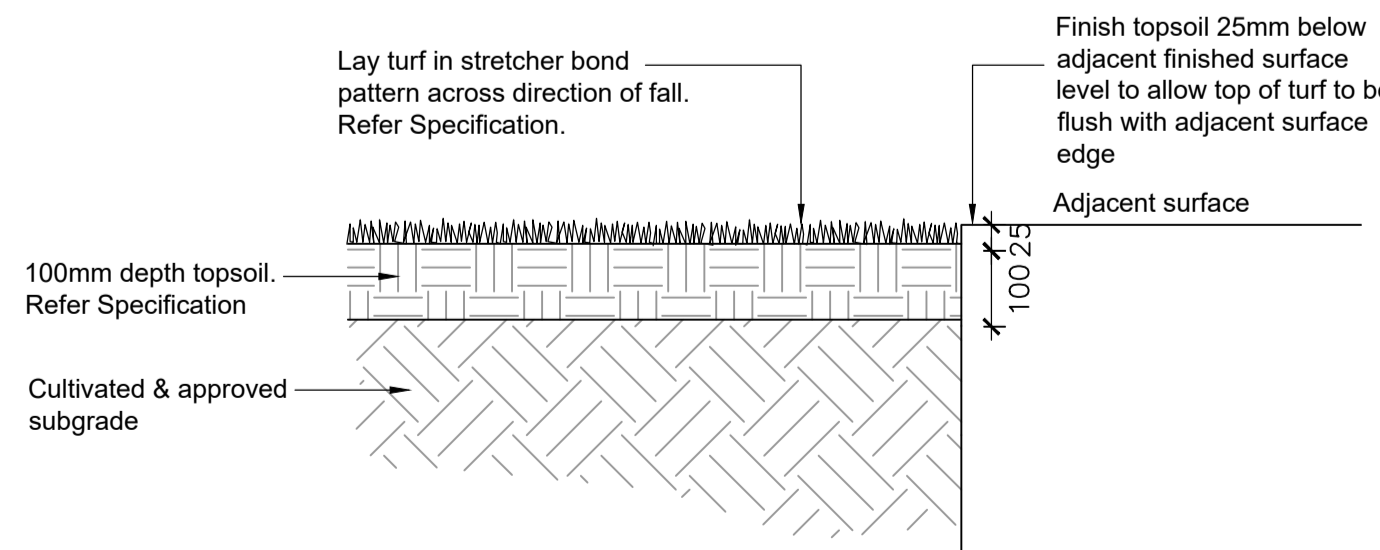
04 TYPICAL TUBESTOCK PLANTING DETAIL

Scale: 1:10 @ A1



05 PLASTIC WOOD COMPOSITE EDGE DETAIL

Scale: 1:10 @ A1



06 TYPICAL TURF DETAIL

Scale: 1:10 @ A1

All advanced trees to be healthy well-grown specimens free of pests and diseases. Water trees prior to planting.

Stake all trees with 3 No. 50x50x2100mm chisel-pointed hardwood stakes driven 300mm into the ground. Tie trees immediately after planting with flexible rubber or canvas ties in 'figure 8' configuration. Secure ties to stakes by wrapping around stakes and nailing with galvanised nails.
NOTE- Stakes are to be painted black.

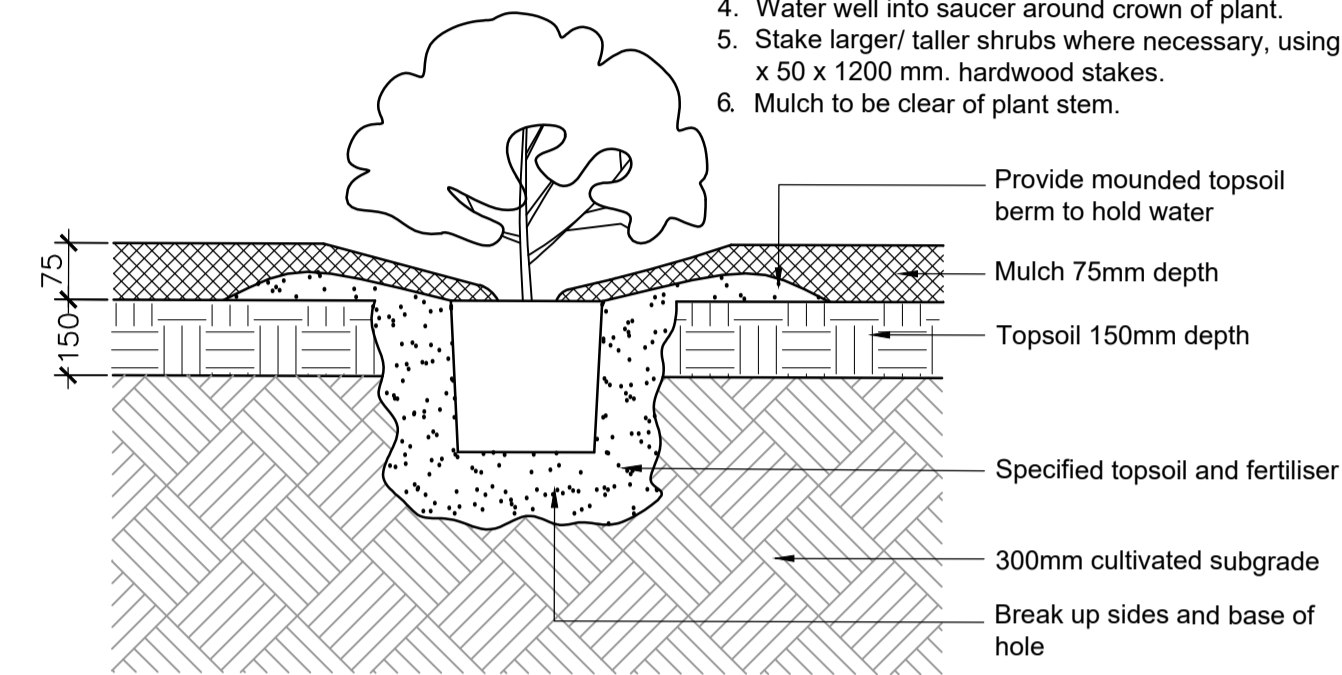
Place top of rootball flush with finished level of planting hole. Gently tease outer root system avoiding major disturbance of plant. Form a watering saucer around immediate crown of plant to hold at least 35 litres of water. Spread a 100mm layer of approved mulch to saucer. Mulch to be kept 100mm away from trunk.

Apply approved fertiliser at rates as per specification. Avoid direct root contact with fertiliser.

Over excavate hole by at least twice the width of the rootball. Ensure sides of hole are roughened. Depth of planting hole no deeper than the height of the root ball. Break / crack soil at base of hole. Backfill hole with approved soil.

NOTES:

- Dig hole twice as deep as rootball and allow at least 200 mm. around sides for backfilling with topsoil.
- Apply fertiliser in base of hole, cover with topsoil (type & rate as per spec). Avoid root contact.
- Place plant in centre of hole, backfill with approved topsoil, firming progressively.
- Water well into saucer around crown of plant.
- Stake larger/ taller shrubs where necessary, using 50 x 50 x 1200 mm. hardwood stakes.
- Mulch to be clear of plant stem.



Provide mounded topsoil berm to hold water
Mulch 75mm depth
Topsoil 150mm depth
Specified topsoil and fertiliser
300mm cultivated subgrade
Break up sides and base of hole

NOT FOR CONSTRUCTION
FOR TOWN PLANNING PURPOSES ONLY

Rev	Date	Description
-	12.20.21	Council Submission
P1	22.09.21	Client review

GROWLAND PTY LTD
BOTANIA RESIDENTIAL SUBDIVISION
1152-1174 TAYLORS ROAD & 451-471 BEATYS ROAD, PLUMPTON

STAGE 4A LANDSCAPE DETAILS

Scale: Varies @ A1 size

CDA Design Group Pty Ltd
Landscape Architecture
Urban Design
185 Faraday Street
Carlton Victoria 3053
T 03 9349 5866
F 03 9349 5877
E office@cdaesigngroup.com.au
Project No. 19029
Date: SEP 2021
Drawn by: FG/NC
Checked: NC
Drawing No. L02

CITY OF MELTON
ENGINEERING PLANS
(LANDSCAPE)
APPROVED
13/10/2021
CITY DESIGN DATE