

# Botania

A new story in Fraser Rise.

## Stage 7 Townhomes



Freedom Facade

Lot Size 263m<sup>2</sup> Frontage 10.5m

3

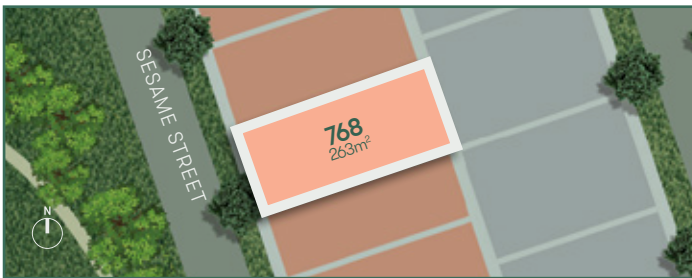
1

2

1.5

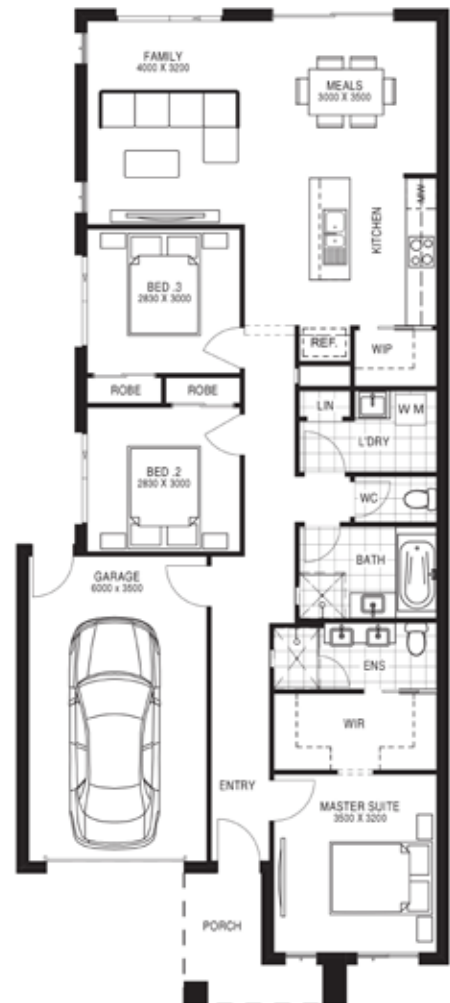
## Tennyson 15

LOT 768 | From \$589,900



### INCLUSIONS

- Full Turnkey Package Including Front, Side & Rear Landscaping with Letterbox, Clothesline & Half Share Fencing
- Exposed Aggregate Driveway, Porch & Alfresco (Plan Specific)
- 2590mm Ceilings Throughout
- Brick Infills above all Windows
- Evaporative Cooling to all Bedrooms & Living Areas
- 40mm Stone Edge in Kitchen With 20mm Stone Edge in En-suite & Bathroom
- 900mm Upright Oven and Cook Top with Canopy Rangehood & Stainless-Steel Dishwasher
- Water Point for Refrigerator
- Spacious 1200mm x 900mm En-suite shower. Tiled Shower Bases, Semi-Frameless Shower Screens and Niches to both En-suite & Bathroom Showers
- Double basins in En-suite & Deluxe Large Vanity
- Free Standing Bath
- Mirrored Sliding Robe Doors (Built-in Robes)
- LED Downlights Throughout the Entire Home
- Block-out Roller Blinds
- Flyscreens & Window Locks to All Openable Windows



Sales enquiries  
0421 096 981 | [townhomes@botania.com.au](mailto:townhomes@botania.com.au)  
**botania.com.au**

Sales office  
1152 Taylors Road, Fraser Rise (Plumpton)  
Open by Appointment Only



Disclaimer: This material is an indicative guide only. All information are subject to change without notice and does not form part of any offer or contract. Growland and its related entities, the landowner, developer, its representatives, employees or agent (collectively referred to as Growland) cannot be held responsible for any inaccuracies and this material should not be relied upon. Purchasers are directed to refer to the contract and vendor statement and must obtain all necessary and relevant information, review all information carefully including any easements, make their own inquiries and obtain independent advice before proceeding. Areas and dimensions are approximates only and subject to survey and title registration dates are approximates only and subject to regulatory approvals and factors beyond Growland's control.