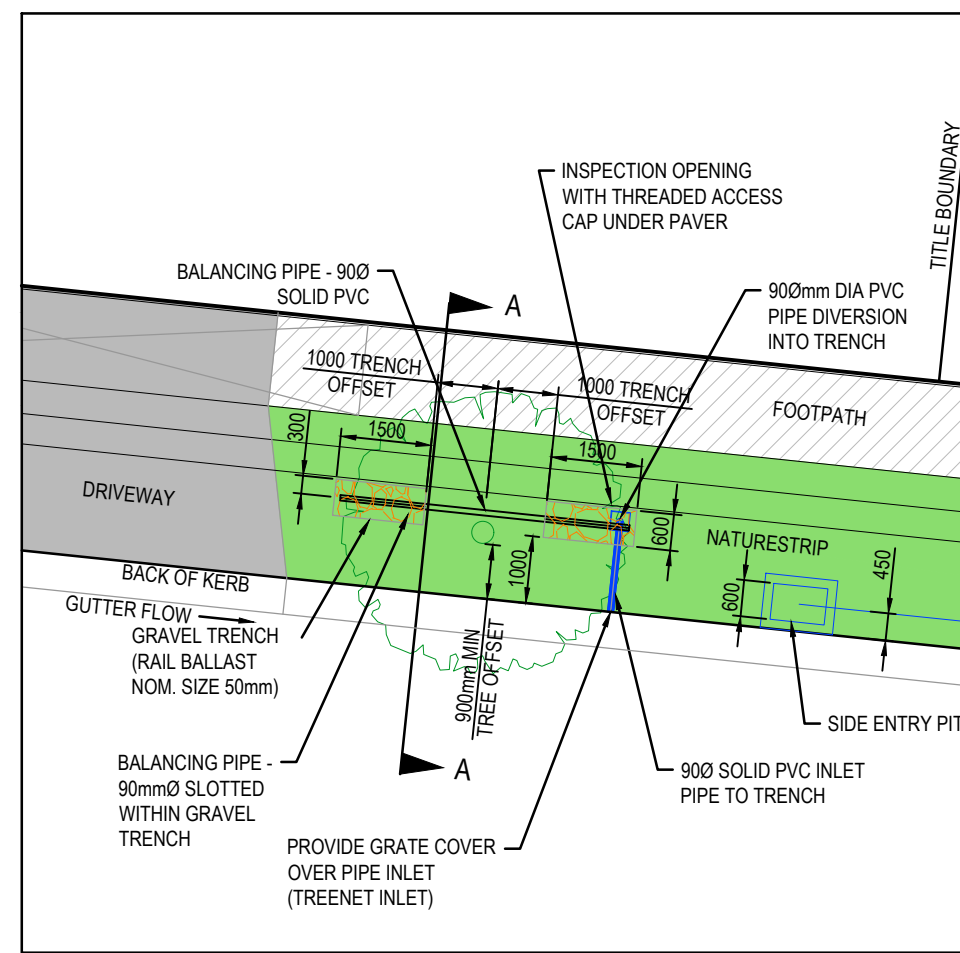


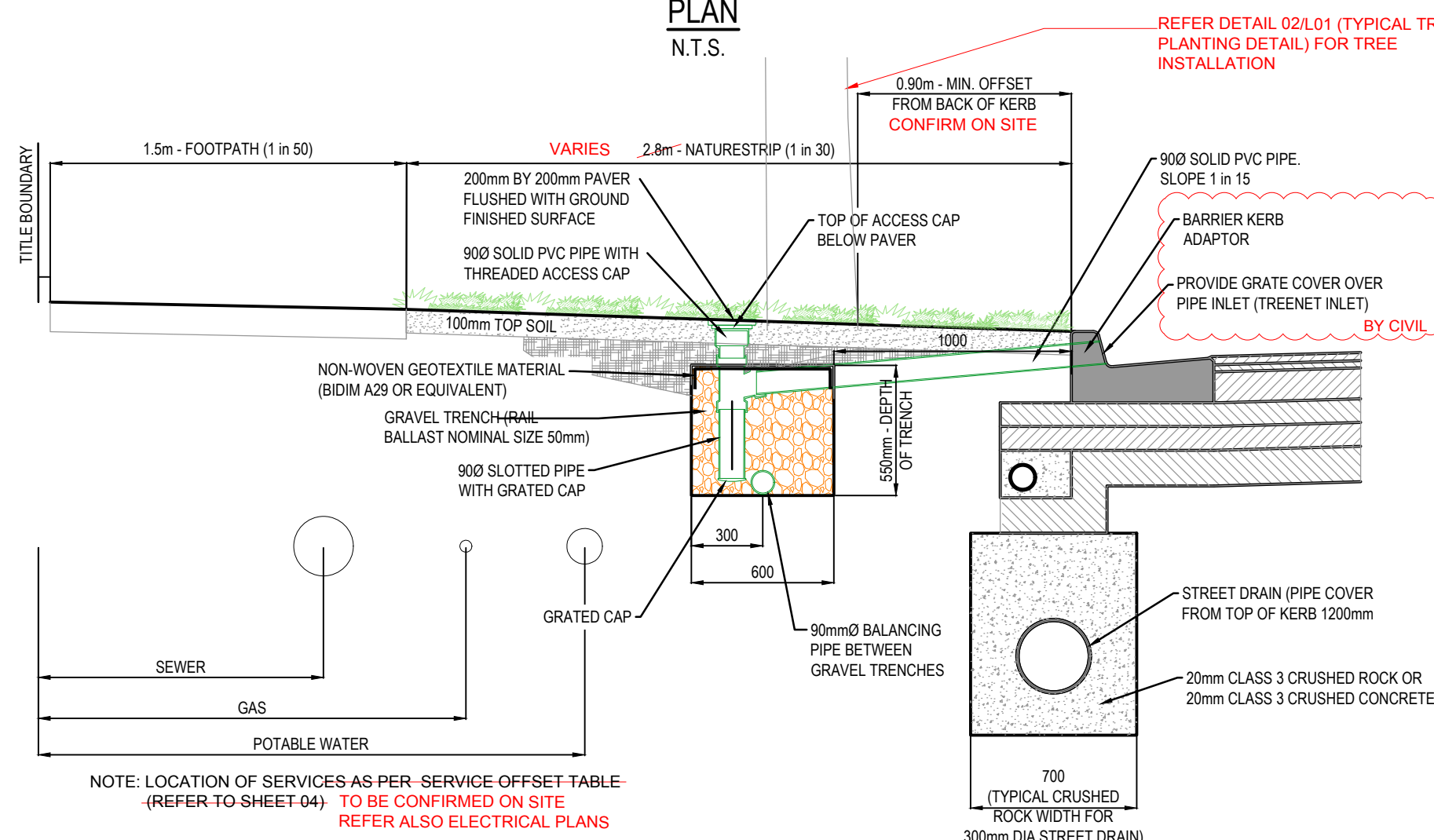


PLANT SCHEDULE - STAGE 2B

KEY	BOTANICAL NAME	COMMON NAME	MATURE HEIGHT & SPREAD (m)	INSTALLED POT SIZE	INSTALLED HEIGHT (min)	QTY
Em	<i>Eucalyptus mannifera</i> 'Little Spotty'	Dwarf Brittle Gum	8 x 6	45L/30mm cat.	2.0m	15
Am	<i>Acacia melanoxylon</i>	Blackwood	14 x 9	45L/30mm cat.	2.0m	13
Ce	<i>Corymbia eximia</i> 'Nana'	Dwarf Yellow Bloodwood	10 x 7	45L/30mm cat.	2.0m	14



PASSIVE STREET TREE IRRIGATION GRAVEL TRENCH (KERB INLET DIVERSION) PLAN
N.T.S.



PASSIVE STREET TREE IRRIGATION GRAVEL TRENCH (KERB INLET DIVERSION) CROSS SECTION A-A
N.T.S.

NATURESTRIP WIDTH (m)	GRAVEL TRENCH OFFSET FROM BACK OF KERB (mm)
≤ 2.50	700
2.80	800
≥ 4.35	1000

GENERAL NOTES

- AT HIGHLY CONSTRAINED SITES, GRAVEL TRENCHES CAN BE MODIFIED IN THE FOLLOWING WAYS:
- REDUCED OFFSET OF 0.75m FROM TREE CENTRELINE
- DIMENSION 1.0m LONG x 0.6m WIDE x 0.75m DEEP
- NATURESTRIP ≤ 2.5m DIMENSION CAN BE 1.5m LONG x 0.4m WIDE x 0.75m DEEP

NOTES:

- FOR PASSIVE STREET TREE IRRIGATION DETAIL REFER TO MELTON CITY COUNCIL STANDARD DRAWING: PASSIVE STREET TREE IRRIGATION GRAVEL TRENCH (KERB INLET DIVERSION)
- PASSIVE IRRIGATION PIPES AND FITTINGS TO BE 90mm PVC SEWER CLASS
- ALL PVC JOINTS TO BE SEALED WITH SOLVENT CEMENT
- ALL GRASSED AREAS TO BE TOP DRESSED WITH 100mm TOPSOIL AND SEEDED AS SPECIFIED

01
-
Scale: NTS

COUNCIL STANDARD PASSIVE STREET TREE IRRIGATION GRAVEL TRENCH DETAIL

Scale: NTS

DRAWING ACCURACY NOTE

This drawing has been prepared upon Engineering drawings which may have been superseded. The Contractor is advised to consult with other trades and the Construction Manager should any discrepancies become apparent prior to & during construction.

SERVICES NOTES

Location of all services are to be confirmed on site. Contact 'Dial Before You Dig' & Refer Civil drawings for services key and further detail.

SETOUT NOTE

Setout to be approved on site by the Superintendent prior to commencement of construction works.

LEGEND

- PROPOSED TREES
Refer Plant Schedule & Detail 02/L01
- REDUCED SERVICE OFFSET
Modified passive irrigation required. To be confirmed on site with Council representative. Note: zone indicated represents 2.5m radius from centre of tree
- GRASSING - HYDROMULCH
Refer Specification
- EXISTING CONTOURS
At 0.20m intervals
- STAGE BOUNDARY

TREE SETOUT NOTES

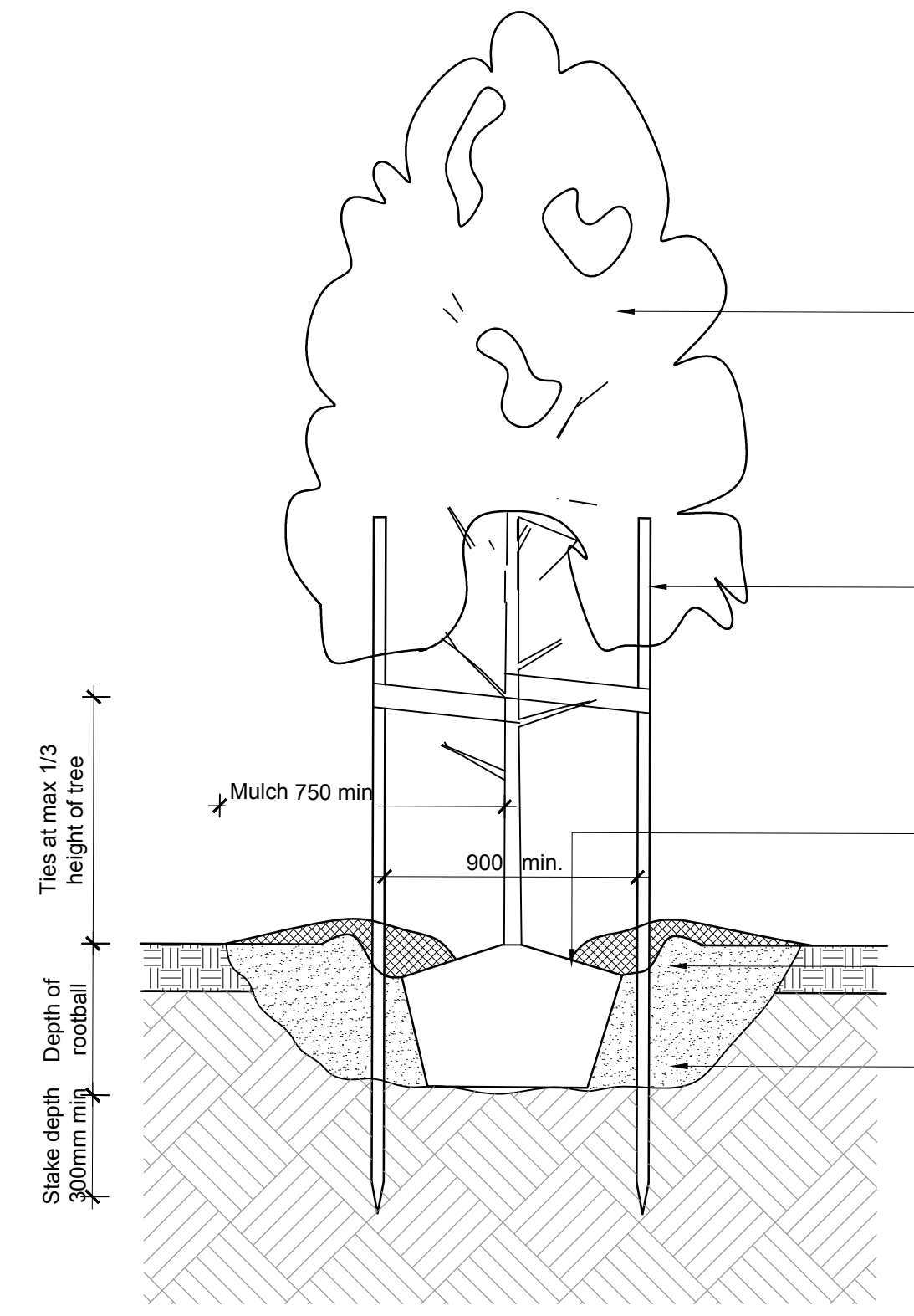
- Proposed trees may require removal / relocation to allow for services, crossovers and lighting.
- Final setout of trees to be confirmed on site by the Superintendent prior to installation.
- Trees are not to be placed directly above services (including gas and water)
- Trees are to be planted with formed watering basins and mulched.

CULTIVATION NOTE

Cultivation to be approved by the Superintendent prior to Civil placing topsoil.

02
-
Scale: 1:20 @ A1

TYPICAL TREE PLANTING DETAIL



All advanced trees to be healthy well-grown specimens free of pests and diseases. Water trees prior to planting.

Stake all trees with 3 No. 50x50x2100mm chisel-pointed hardwood stakes driven 300mm into the ground. Tie trees immediately after planting with flexible rubber or canvas ties in 'figure 8' configuration. Secure ties to stakes by wrapping around stakes and nailing with galvanised nails.
NOTE- Stakes are to be painted black.

Place top of rootball flush with finished level of planting hole. Gently tease outer root system avoiding major disturbance of plant. Form a watering saucer around immediate crown of plant to hold at least 35 litres of water. Spread a 100mm layer of approved mulch to saucer. Mulch to be kept 100mm away from trunk.

Apply approved fertiliser at rates as per specification. Avoid direct root contact with fertiliser.

Over excavate hole by at least twice the width of the rootball. Ensure sides of hole are roughened. Depth of planting hole no deeper than the height of the root ball. Break / crack soil at base of hole. Backfill hole with approved soil.

CITY OF MELTON ENGINEERING PLANS (LANDSCAPE) APPROVED
E. Whelan 18/2/2020
CITY DESIGN DATE

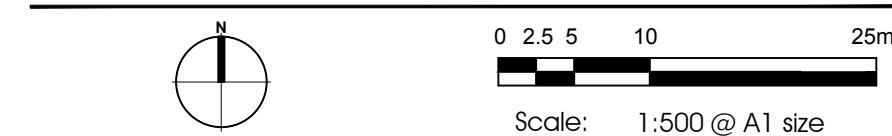
NOT FOR CONSTRUCTION
FOR TOWN PLANNING PURPOSES ONLY

Rev	Date	Description
1	13.02.2020	COUNCIL ISSUE

GROWLAND PTY LTD

BOTANIA RESIDENTIAL SUBDIVISION
1152-1174 TAYLORS ROAD & 451-471 BEATTYS ROAD, PLUMPTON

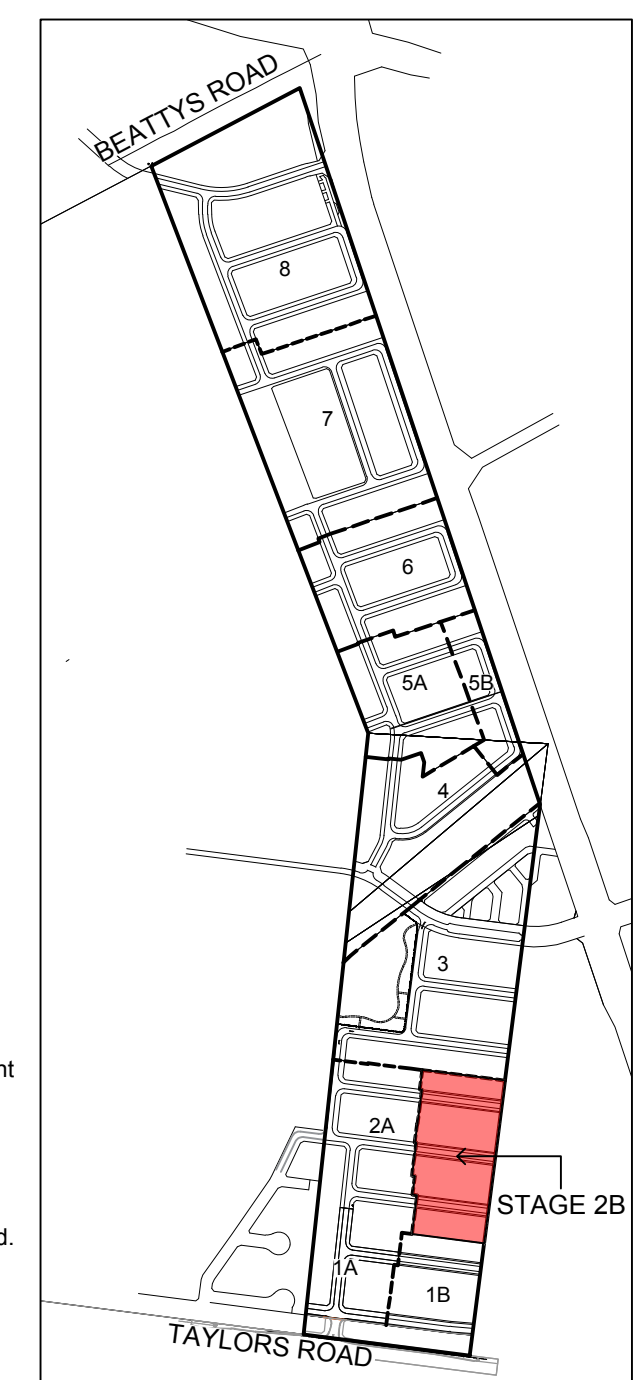
STAGE 2B LANDSCAPE STREETScape PLAN & DETAILS



CDA Design Group Pty Ltd
Landscape Architecture
Urban Design
185 Faraday Street
Carlton Victoria 3053
T 03 9349 5866
F 03 9349 5877
E office@cdaesigngroup.com.au

Project No. 19029_28
Date: FEB 2020
Drawn by: NC/ASP
Checked: NC

Drawing No. L01



KEY PLAN (INDICATIVE STAGING PLAN)
NOT TO SCALE