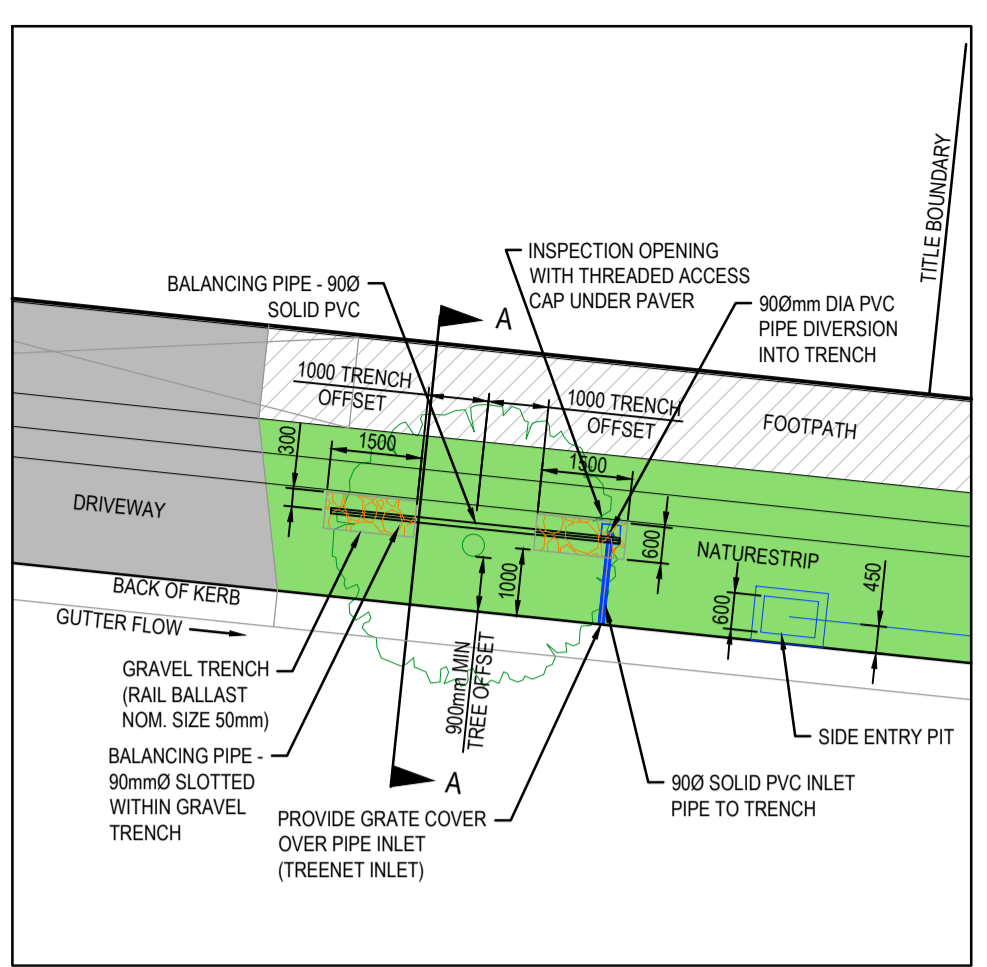
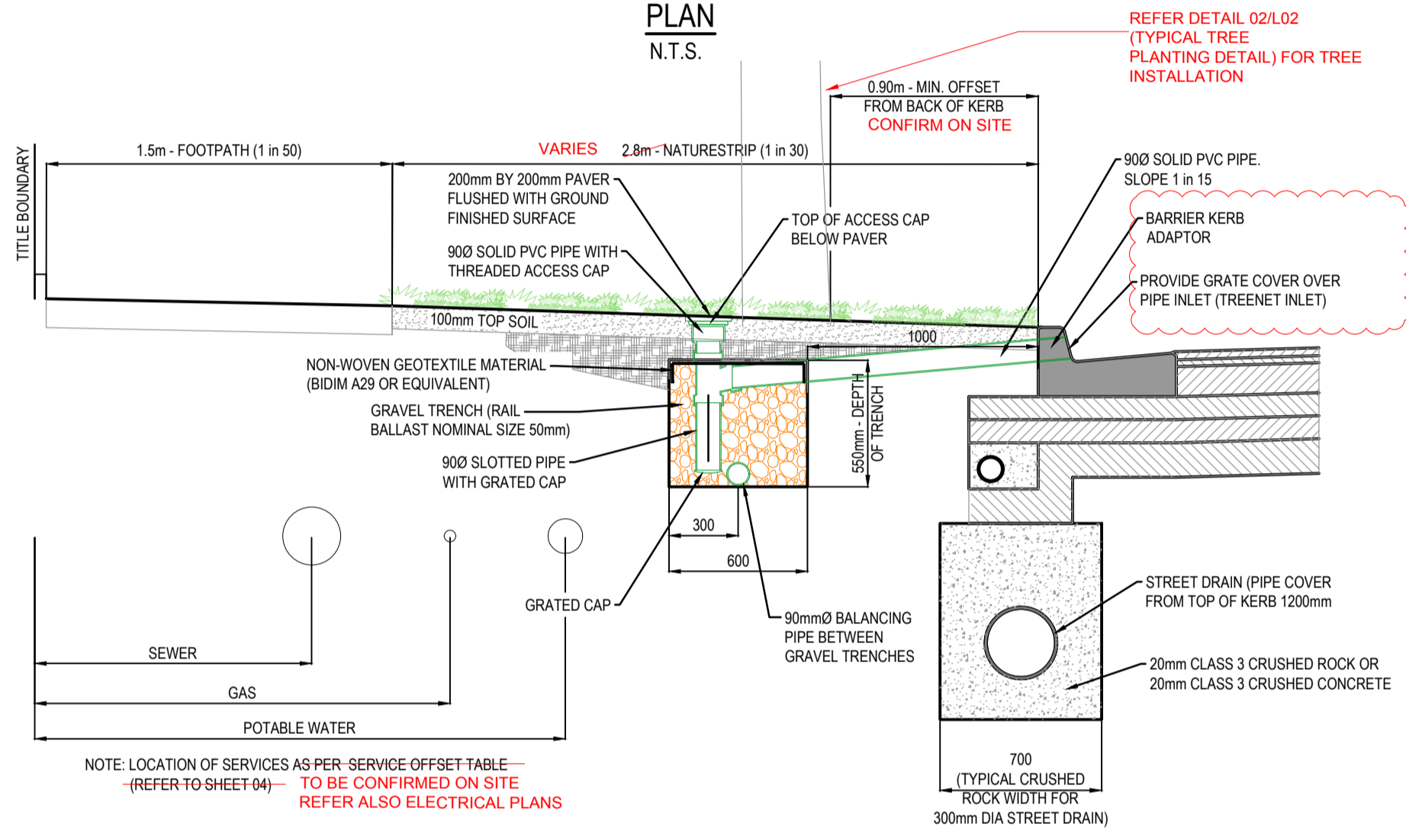


PLANT SCHEDULE

KEY	BOTANICAL NAME	COMMON NAME	MATURE HEIGHT & SPREAD (m)	INSTALLED POT SIZE	INSTALLED HEIGHT (min)	QTY
Up	<i>Ulmus parvifolia</i> 'Todd'	Chinese Elm	10 x 9	45L/35mm cal.	2.0m	8
Em	<i>Eucalyptus mannifera</i> 'Little Spotty'	Dwarf Brittle Gum	8 x 6	45L/30mm cal.	2.0m	16
Am	<i>Acacia melanoxylon</i>	Blackwood	14 x 9	45L/30mm cal.	2.0m	10
Ce	<i>Corymbia eximia</i> 'Nana'	Dwarf Yellow Bloodwood	10 x 7	45L/30mm cal.	2.0m	11
Ep	<i>Eucalyptus polyanthemos</i>	Red Box	18 x 9	45L/30mm cal.	2.4m	3



PASSIVE STREET TREE IRRIGATION GRAVEL TRENCH (KERB INLET DIVERSION) PLAN N.T.S.



PASSIVE STREET TREE IRRIGATION GRAVEL TRENCH (KERB INLET DIVERSION) CROSS SECTION A-A N.T.S.

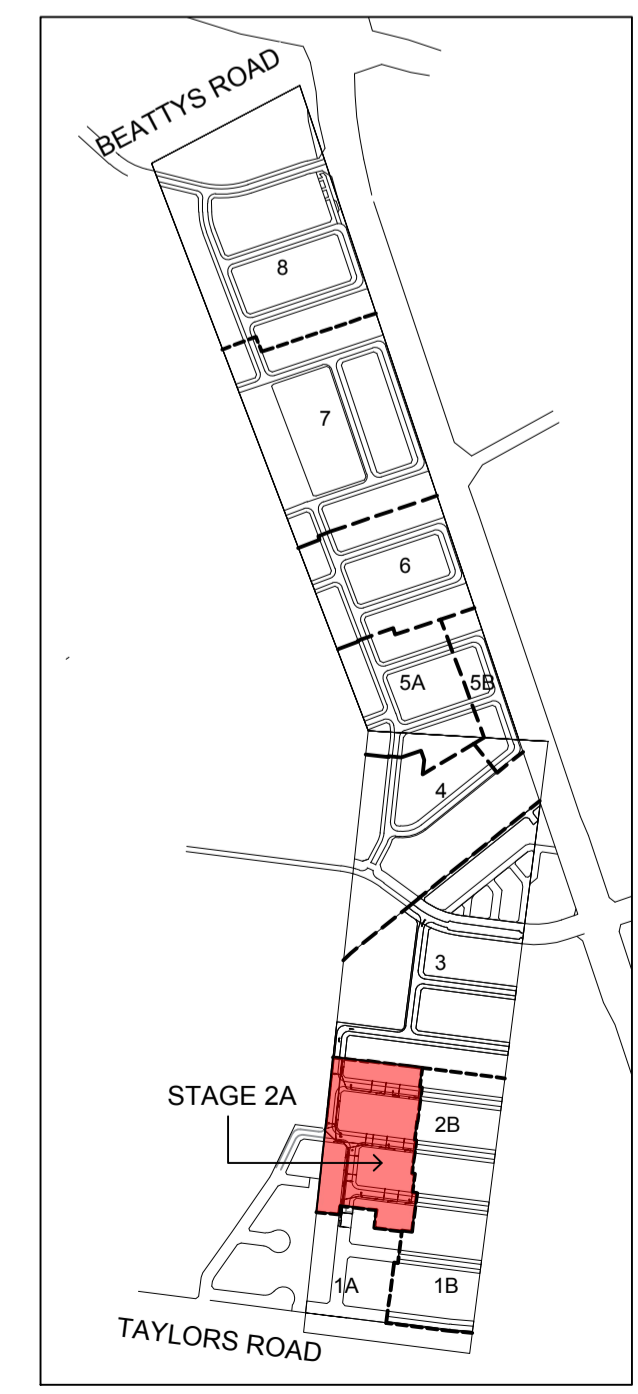
NATURESTRIP WIDTH (m)	GRAVEL TRENCH OFFSET FROM BACK OF KERB (mm)
≤ 2.50	700
2.80	800
≥ 4.35	1000

- GENERAL NOTES:**
- AT HIGHLY CONSTRAINED SITES, GRAVEL TRENCHES CAN BE MODIFIED IN THE FOLLOWING WAYS:
 - REDUCED OFFSET OF 0.75m FROM TREE CENTRELINE
 - DIMENSION 1.0m LONG x 0.6m WIDE x 0.75m DEEP
 - NATURESTRIP ≤ 2.5m DIMENSION CAN BE 1.5m LONG x 0.4m WIDE x 0.75m DEEP
- NOTES:**
- FOR PASSIVE STREET TREE IRRIGATION DETAIL REFER TO MELTON CITY COUNCIL STANDARD DRAWING - PASSIVE STREET TREE IRRIGATION GRAVEL TRENCH (KERB INLET DIVERSION)
 - PASSIVE IRRIGATION PIPES AND FITTINGS TO BE Ø90mm PVC SEWER CLASS
 - ALL PVC JOINTS TO BE SEALED WITH SOLVENT CEMENT
 - ALL GRASSED AREAS TO BE TOP DRESSED WITH 100mm TOPSOIL AND SEEDED AS SPECIFIED

01 COUNCIL STANDARD PASSIVE STREET TREE IRRIGATION GRAVEL TRENCH DETAIL
Scale: NTS

LIST OF REVISIONS

- REV A**
- Updated base plan
 - Tree species change to match Landscape Masterplan
 - Add annotations to Detail 02
 - Show reduced offset service zone
 - Adjust tree locations
- REV B**
- Stage numbers added to key plan
 - Tree outside temp retarding basin installed and not bonded and added to schedule
 - Garden bed planting to west side of Cherish Street
 - Page layout & inclusion of L02



KEY PLAN (INDICATIVE STAGING PLAN) NOT TO SCALE

LEGEND

- PROPOSED TREES
Refer Plant Schedule & Detail 01/L01
- REDUCED SERVICE OFFSET
Modified passive irrigation required. To be confirmed on site with Council representative. Note: zone indicated represents 2.5m radius from centre of tree
- GARDEN BED PLANTING
Refer also L02 for module detail and plant schedule
- GRASSING
Refer Specification
- EXISTING CONTOURS
At 0.20m intervals
- STAGE BOUNDARY

TREE SETOUT NOTES

- Proposed trees may require removal / relocation to allow for services, crossovers and lighting.
- Final setout of trees to be confirmed on site by the Superintendent prior to installation.
- Trees are not to be placed directly above services (including gas and water)
- Trees are to be planted with formed watering basins and mulched

CULTIVATION NOTE

Cultivation to be approved by the Superintendent prior to Civil placing topsoil.

DRAWING ACCURACY NOTE

This drawing has been prepared upon Engineering drawings which may have been superseded. The Contractor is advised to consult with other trades and the Construction Manager should any discrepancies become apparent prior to & during construction.

SERVICES NOTES

Location of all services are to be confirmed on site. Contact 'Dial Before You Dig' & Refer Civil drawings for services key and further detail.

CITY OF MELTON
ENGINEERING PLANS
(LANDSCAPE)
APPROVED
E. Wright 4/2/2020
CITY DESIGN DATE

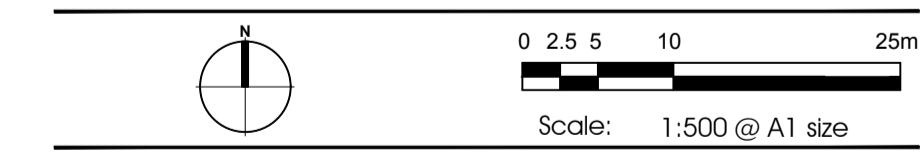
NOT FOR CONSTRUCTION
FOR TOWN PLANNING PURPOSES ONLY

Rev	Date	Description
B	23.01.2020	COUNCIL RESUBMISSION
B-P1	21.01.2020	FOR REVIEW & COMMENT
A	12.12.2019	COUNCIL ISSUE
A-P1	10.12.2019	ISSUE FOR CONSULTANT REVIEW
-	01.10.2019	COUNCIL ISSUE

GROWLAND PTY LTD

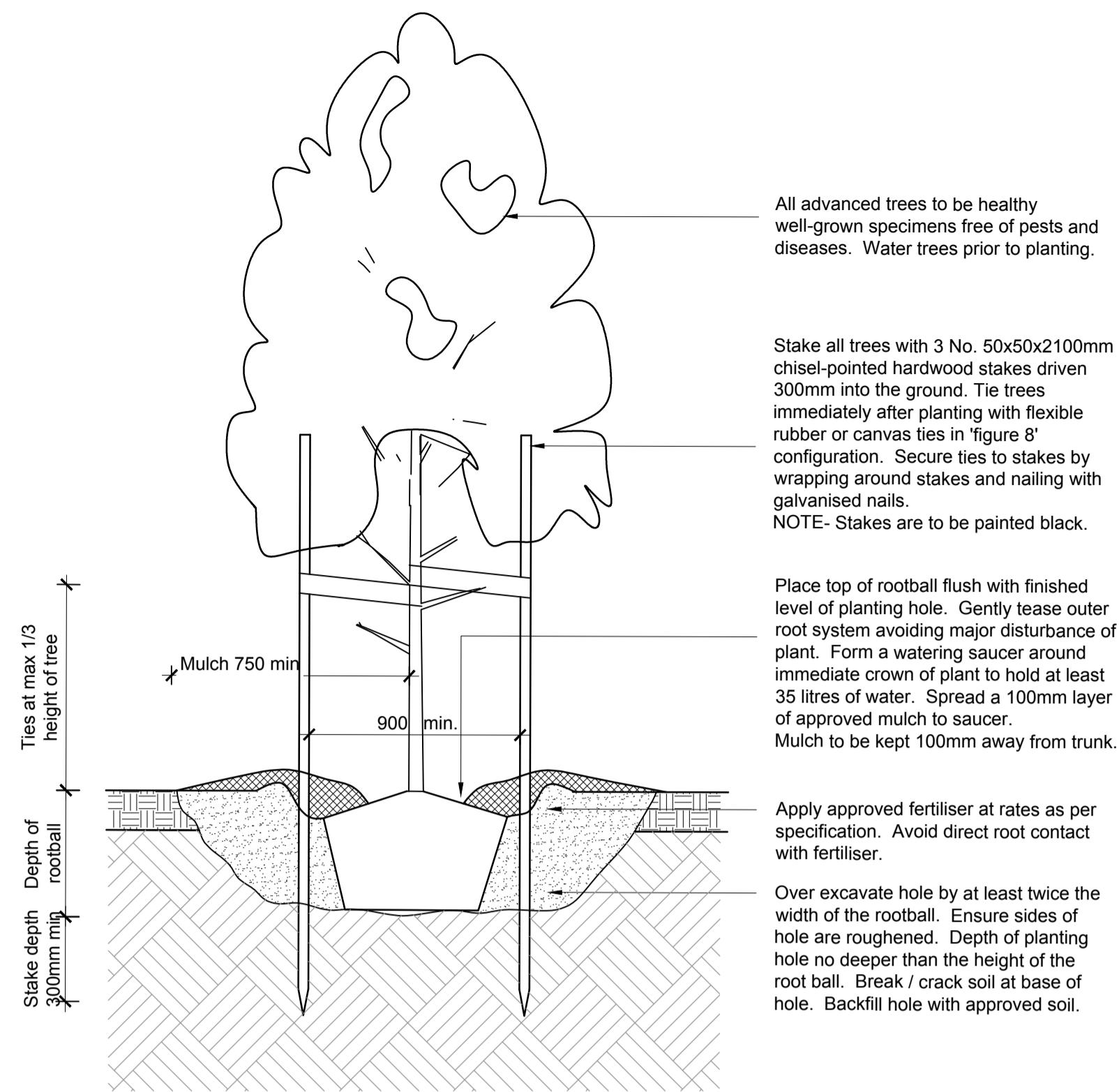
BOTANIA RESIDENTIAL SUBDIVISION
1152-1174 TAYLORS ROAD & 451-471 BEATTYS ROAD, PLUMPTON

STAGE 2A LANDSCAPE STREETScape PLAN & DETAILS



CDA Design Group Pty Ltd
Landscape Architecture
Urban Design
185 Faraday Street
Carlton Victoria 3053
T 03 9349 5866
F 03 9349 5877
E office@cdaesigngroup.com.au

Project No. 19029_2A
Date: SEP 2019
Drawn by: ASP/INC
Checked: AP/IV/NC
Drawing No. L01B



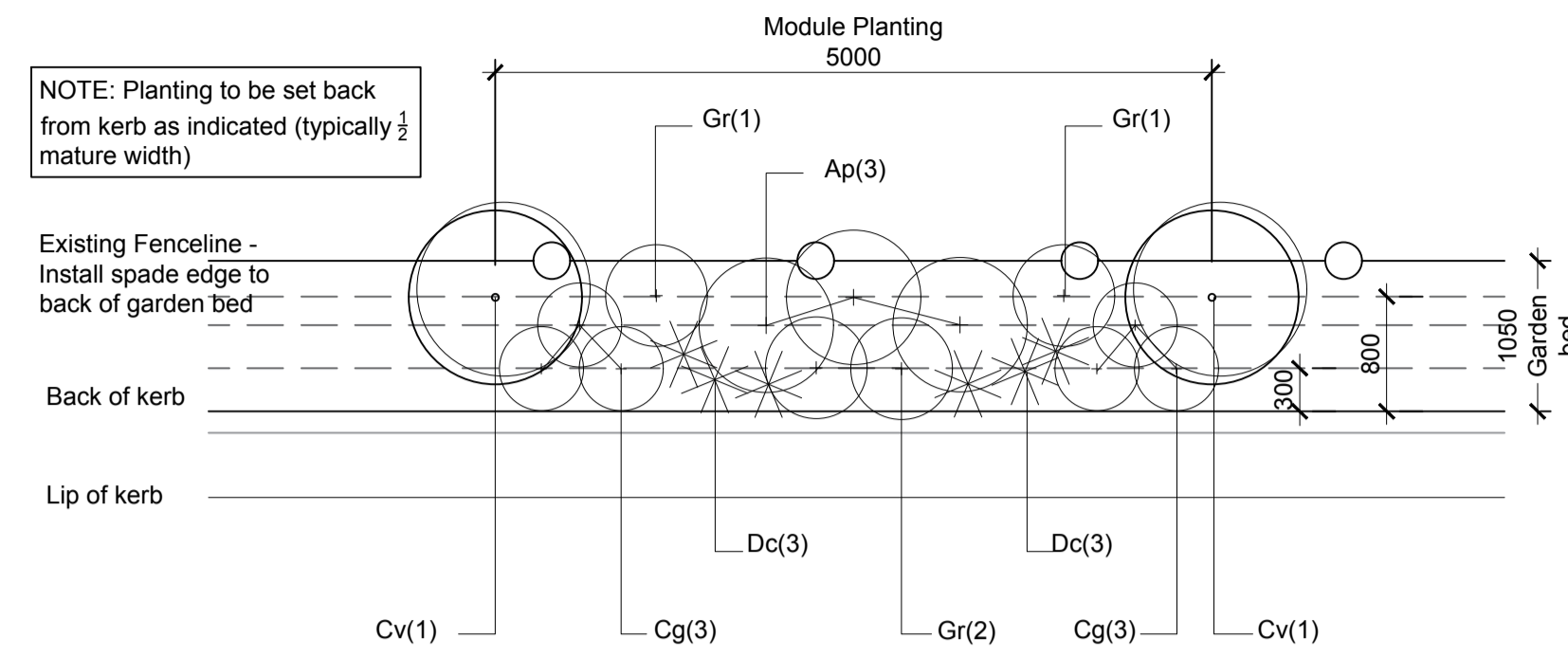
All advanced trees to be healthy well-grown specimens free of pests and diseases. Water trees prior to planting.

Stake all trees with 3 No. 50x50x2100mm chisel-pointed hardwood stakes driven 300mm into the ground. Tie trees immediately after planting with flexible rubber or canvas ties in 'figure 8' configuration. Secure ties to stakes by wrapping around stakes and nailing with galvanised nails.
NOTE- Stakes are to be painted black.

Place top of rootball flush with finished level of planting hole. Gently tease outer root system avoiding major disturbance of plant. Form a watering saucer around immediate crown of plant to hold at least 35 litres of water. Spread a 100mm layer of approved mulch to saucer. Mulch to be kept 100mm away from trunk.

Apply approved fertiliser at rates as per specification. Avoid direct root contact with fertiliser.

Over excavate hole by at least twice the width of the rootball. Ensure sides of hole are roughened. Depth of planting hole no deeper than the height of the root ball. Break / crack soil at base of hole. Backfill hole with approved soil.



05 5m PLANTING MODULE FOR CHERISH STREET
Scale: 1:50 @ A1

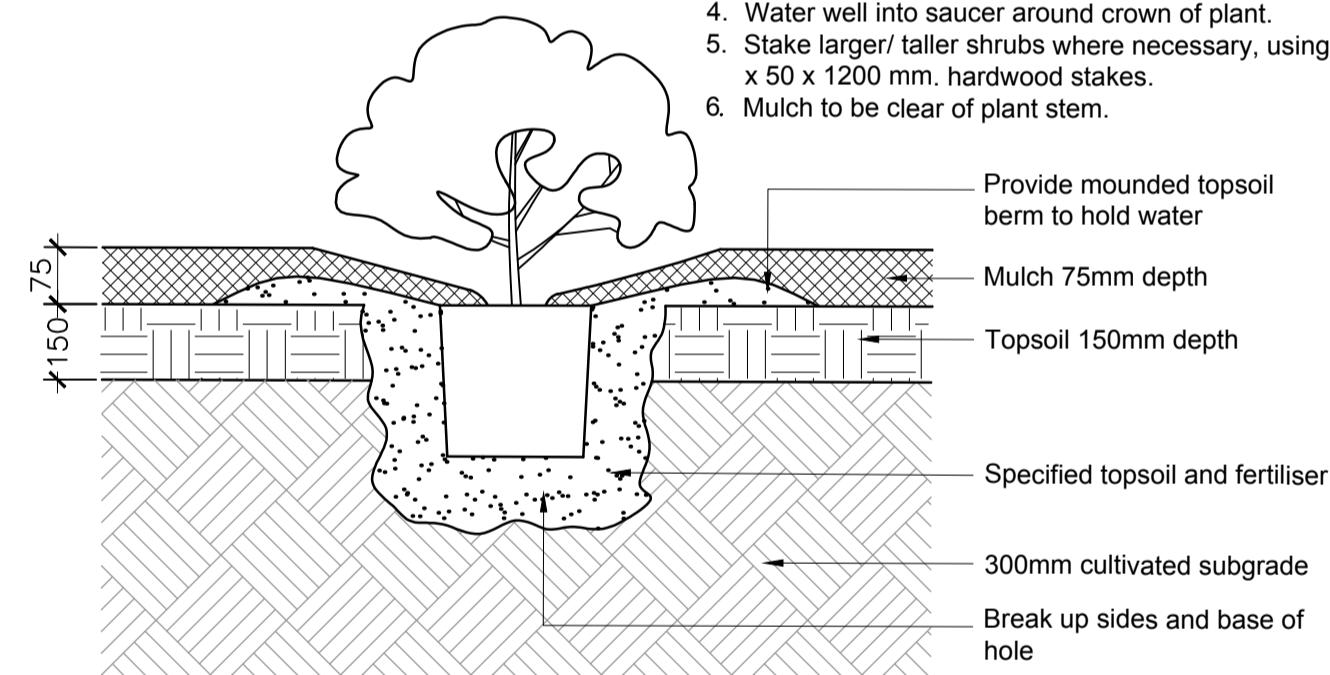
PLANT SCHEDULE - CHERISH STREET GARDEN BED PLANTING

KEY	BOTANICAL NAME	COMMON NAME	MATURE HEIGHT & SPREAD (m)	INSTALLED POT SIZE	QTY
SHRUBS AND TUFTING PLANTS					
Ac	<i>Acacia pravissima</i> 'Little Nugget'	Little Nugget Wattle	1-2 x 0.6-1	150mm	42
Cv	<i>Callistemon viminalis</i> 'Macarthur'	Macarthur Bottlebrush	1.8 x 1.5	150mm	16
Cg	<i>Correa glabra</i> 'Ivory Lantern'	Native Fuchsia	0.5 x 0.5	150mm	87
Dc	<i>Dianella caerulea</i> 'Cassa Blue'	Blue Flax Lilly	0.5 x 0.4	150mm	125
Gr	<i>Grevillea rosmarinifolia</i> 'Crimson Villea'	Crimson Rosemary Grevillea	0.8 x 0.8	150mm	57

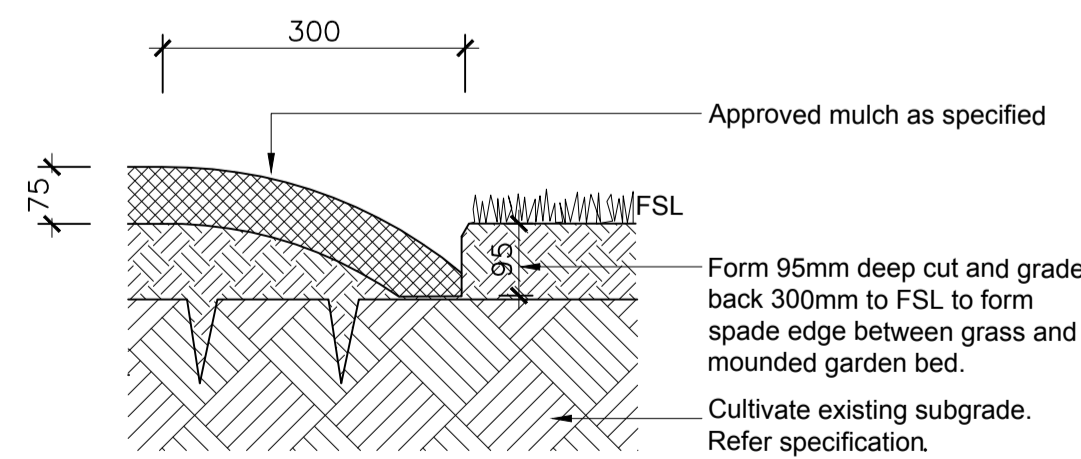
02 TYPICAL TREE PLANTING DETAIL
Scale: 1:20 @ A1

NOTES:

1. Dig hole twice as deep as rootball and allow at least 200 mm. around sides for backfilling with topsoil.
2. Apply fertiliser in base of hole, cover with topsoil (type & rate as per spec). Avoid root contact.
3. Place plant in centre of hole, backfill with approved topsoil, firming progressively.
4. Water well into saucer around crown of plant.
5. Stake larger/ taller shrubs where necessary, using 50 x 50 x 1200 mm. hardwood stakes.
6. Mulch to be clear of plant stem.

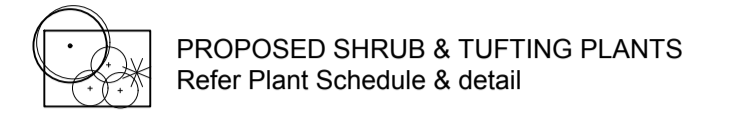


03 TYPICAL SHRUB PLANTING DETAIL
Scale: 1:10 @ A1



04 TYPICAL SPADE EDGE DETAIL
Scale: 1:10 @ A1

LEGEND



DRAWING ACCURACY NOTE

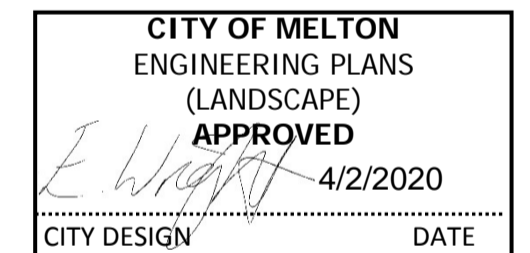
This drawing has been prepared upon Engineering drawings which may have been superseded. The Contractor is advised to consult with other trades and the Construction Manager should any discrepancies become apparent prior to & during construction.

SERVICES NOTES

Location of all services are to be confirmed on site. Contact 'Dial Before You Dig' & Refer Civil drawings for services key and further detail.

SETOUT NOTE

Setout to be approved on site by the Superintendent prior to commencement of construction works.



NOT FOR CONSTRUCTION
FOR TOWN PLANNING PURPOSES ONLY

Rev	Date	Description
-	23/01/2020	COUNCIL ISSUE
P1	21/01/2020	FOR REVIEW & COMMENT

GROWLAND PTY LTD

BOTANIA RESIDENTIAL SUBDIVISION
1152-1174 TAYLORS ROAD & 451-471 BEATTYS ROAD, PLUMPTON

STAGE 2A LANDSCAPE MODULE PLANTING & DETAILS

Scale: Varies @ A1 size

CDA Design Group Pty Ltd
Landscape Architecture
Urban Design
185 Faraday Street
Carlton Victoria 3053
T 03 9349 5866
F 03 9349 5877
E office@cdaesigngroup.com.au

Project No. 19029_2A
Date: JAN 2020
Drawn by: NC
Checked: ASP

Drawing No. L02

