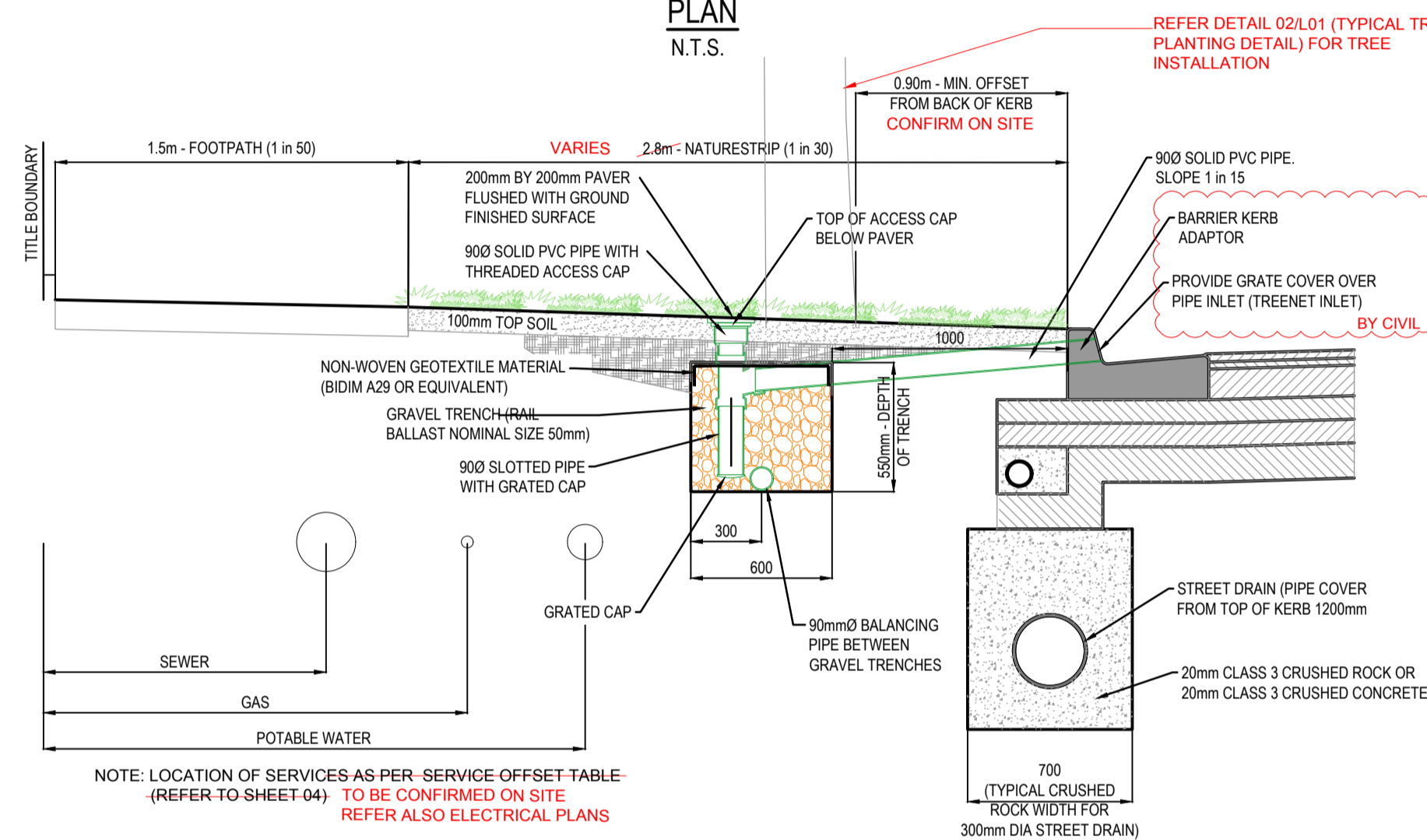


PASSIVE STREET TREE IRRIGATION GRAVEL TRENCH (KERB INLET DIVERSION) PLAN N.T.S.



PASSIVE STREET TREE IRRIGATION GRAVEL TRENCH (KERB INLET DIVERSION) CROSS SECTION A-A N.T.S.

NATURESTRIP WIDTH (m)	GRAVEL TRENCH OFFSET FROM BACK OF KERB (mm)
≤ 2.50	700
2.80	800
≥ 4.35	1000

GENERAL NOTES

- AT HIGHLY CONSTRAINED SITES, GRAVEL TRENCHES CAN BE MODIFIED IN THE FOLLOWING WAYS:
  - REDUCED OFFSET OF 0.75m FROM TREE CENTRELINE
  - DIMENSION 1.0m LONG x 0.6m WIDE x 0.75m DEEP
  - NATURESTRIP ≤ 2.5m DIMENSION CAN BE 1.5m LONG x 0.4m WIDE x 0.75m DEEP

NOTES:

- FOR PASSIVE STREET TREE IRRIGATION DETAIL REFER TO MELTON CITY COUNCIL STANDARD DRAWING: PASSIVE STREET TREE IRRIGATION GRAVEL TRENCH (KERB INLET DIVERSION)
- PASSIVE IRRIGATION PIPES AND FITTINGS TO BE 90mm PVC SEWER CLASS
- ALL PVC JOINTS TO BE SEALED WITH SOLVENT CEMENT
- ALL GRASSED AREAS TO BE TOP DRESSED WITH 100mm TOPSOIL AND SEED AS SPECIFIED

01 -

COUNCIL STANDARD PASSIVE STREET TREE IRRIGATION GRAVEL TRENCH DETAIL

Scale: NTS

DRAWING ACCURACY NOTE

This drawing has been prepared upon Engineering drawings which may have been superseded. The Contractor is advised to consult with other trades and the Construction Manager should any discrepancies become apparent prior to & during construction.

SERVICES NOTES

Location of all services are to be confirmed on site. Contact 'Dial Before You Dig' & Refer Civil drawings for services key and further detail.

SETOUT NOTE

Setout to be approved on site by the Superintendent prior to commencement of construction works.

LEGEND

- PROPOSED TREES: Refer Plant Schedule & Detail 02/L01
- REDUCED SERVICE OFFSET: Modified passive irrigation required. To be confirmed on site with Council representative. Note: zone indicated represents 2.5m radius from centre of tree
- GRASSING - HYDROMULCH: Refer Specification
- GRASSING - KIKUYU TURF: Refer Specification
- EXISTING CONTOURS: At 0.20m intervals
- STAGE BOUNDARY

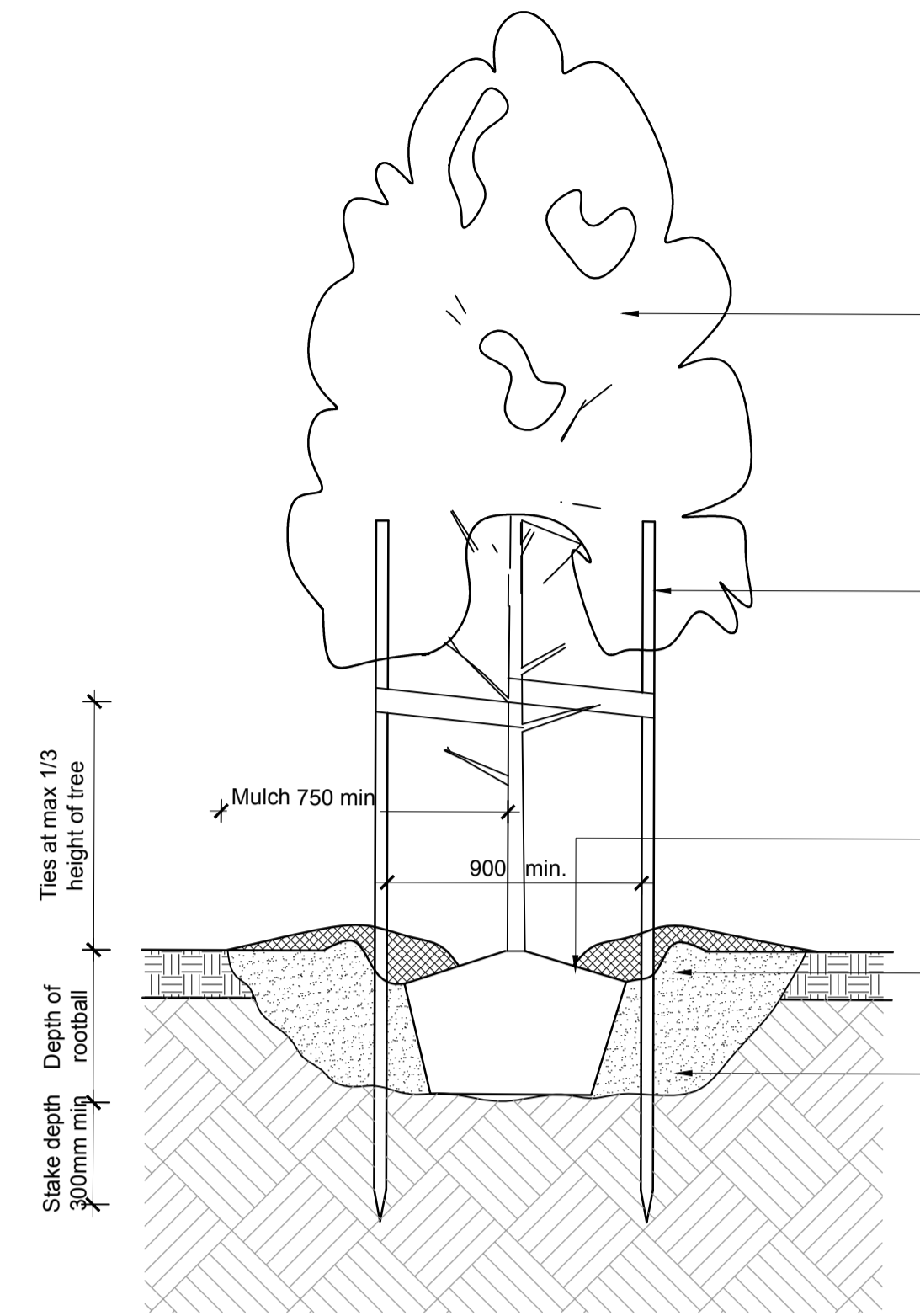
TREE SETOUT NOTES

- Proposed trees may require removal / relocation to allow for services, crossovers and lighting.
- Final setout of trees to be confirmed on site by the Superintendent prior to installation.
- Trees are not to be placed directly above services (including gas and water)
- Trees are to be planted with formed watering basins and mulched.

CULTIVATION NOTE

Cultivation to be approved by the Superintendent prior to Civil placing topsoil.

02 - TYPICAL TREE PLANTING DETAIL Scale: 1:20 @ A1



All advanced trees to be healthy well-grown specimens free of pests and diseases. Water trees prior to planting.

Stake all trees with 3 No. 50x50x2100mm chisel-pointed hardwood stakes driven 300mm into the ground. Tie trees immediately after planting with flexible rubber or canvas ties in 'figure 8' configuration. Secure ties to stakes by wrapping around stakes and nailing with galvanised nails. NOTE- Stakes are to be painted black.

Place top of rootball flush with finished level of planting hole. Gently tease outer root system avoiding major disturbance of plant. Form a watering saucer around immediate crown of plant to hold at least 35 litres of water. Spread a 100mm layer of approved mulch to saucer. Mulch to be kept 100mm away from trunk.

Apply approved fertiliser at rates as per specification. Avoid direct root contact with fertiliser.

Over excavate hole by at least twice the width of the rootball. Ensure sides of hole are roughened. Depth of planting hole no deeper than the height of the root ball. Break / crack soil at base of hole. Backfill hole with approved soil.

CITY OF MELTON  
ENGINEERING PLANS  
(LANDSCAPE)  
APPROVED  
17/2/2020  
CITY DESIGN DATE

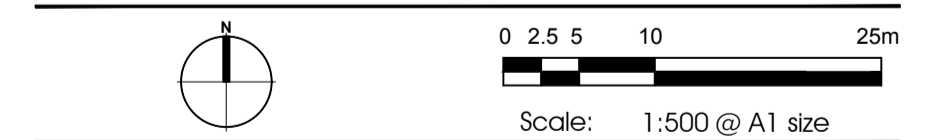
NOT FOR CONSTRUCTION  
FOR TOWN PLANNING PURPOSES ONLY

Rev	Date	Description
13.02.2020	COUNCIL ISSUE	

GROWLAND PTY LTD

BOTANIA RESIDENTIAL SUBDIVISION  
1152-1174 TAYLORS ROAD & 451-471 BEATTYS ROAD, PLUMPTON

STAGE 1B LANDSCAPE STREETScape PLAN & DETAILS



CDA Design Group Pty Ltd  
Landscape Architecture  
Urban Design  
185 Faraday Street  
Carlton Victoria 3053  
T 03 9349 5866  
F 03 9349 5877  
E office@cdaesigngroup.com.au

Project No. 19029\_18

Date: FEB 2020

Drawn by: NC/ASP

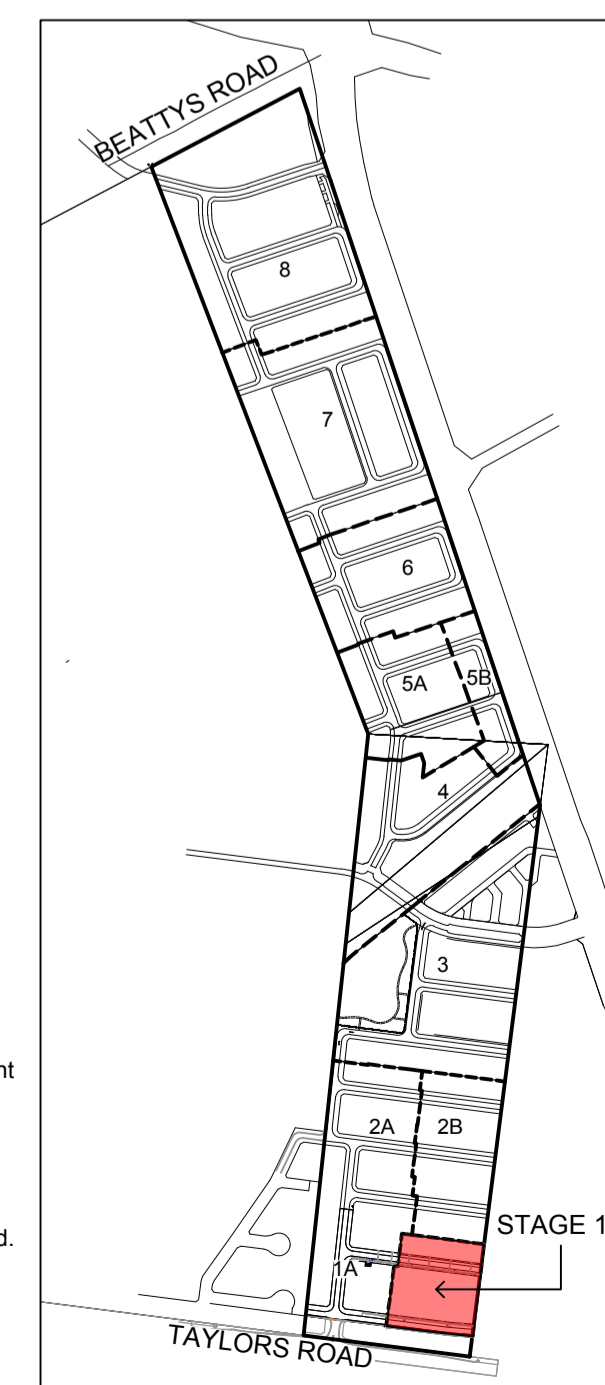
Checked: NC

Drawing No. LO1



PLANT SCHEDULE - STAGE 1B

KEY	BOTANICAL NAME	COMMON NAME	MATURE HEIGHT & SPREAD (m)	INSTALLED POT SIZE	INSTALLED HEIGHT (min)	QTY
Em	<i>Eucalyptus mannifera</i> 'Little Spotty'	Dwarf Brittle Gum	8 x 6	45L/30mm cal.	2.0m	15
Pc	<i>Pyrus calleryana</i> 'Bradford'	Ornamental Pear	12 x 9	45L/35mm cal.	2.0m	8
Cm	<i>Corymbia maculata</i>	Spotted Gum	20 x 12	45L/30mm cal.	2.4m	9



KEY PLAN (INDICATIVE STAGING PLAN) NOT TO SCALE