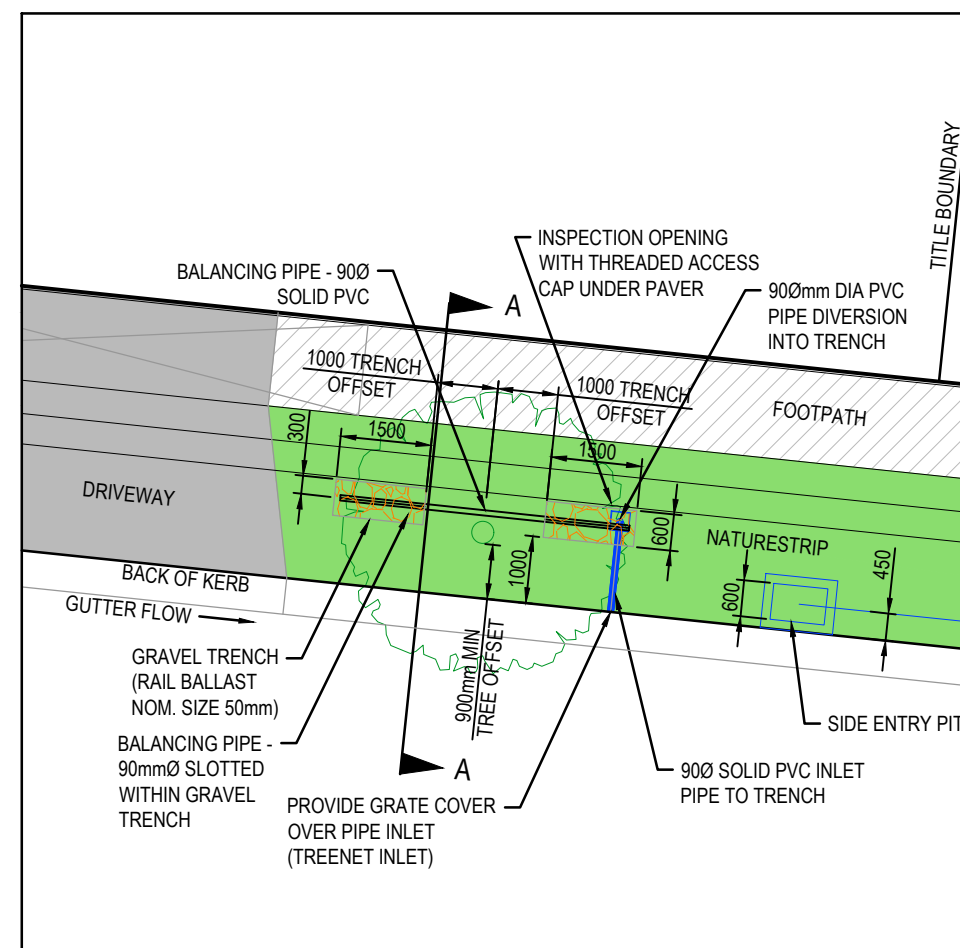
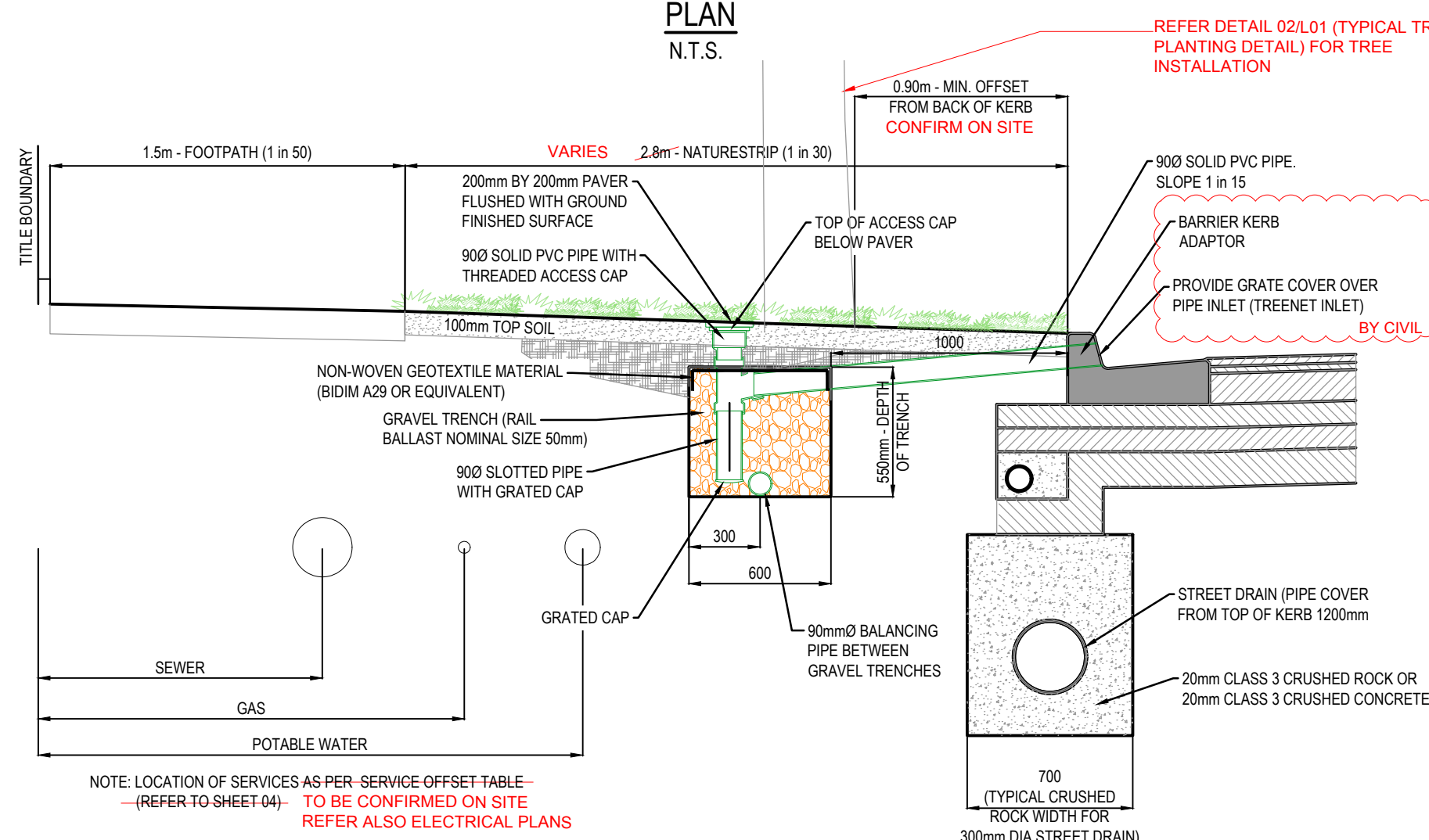


PLANT SCHEDULE - STAGE 1A

KEY	BOTANICAL NAME	COMMON NAME	MATURE HEIGHT & SPREAD (m)	INSTALLED POT SIZE	INSTALLED HEIGHT (min)	QTY
Up	<i>Ulmus parvifolia</i> 'Todd'	Chinese Elm	10 x 9	45L/35mm cal.	2.0m	13
Em	<i>Eucalyptus mannifera</i> 'Little Spotty'	Dwarf Brittle Gum	8 x 6	45L/30mm cal.	2.0m	10
Pc	<i>Pyrus calleryana</i> 'Bradford'	Ornamental Pear	12 x 9	45L/35mm cal.	2.0m	5
Cm	<i>Corymbia maculata</i>	Spotted Gum	20 x 12	45L/30mm cal.	2.4m	7



PASSIVE STREET TREE IRRIGATION GRAVEL TRENCH (KERB INLET DIVERSION) PLAN N.T.S.



PASSIVE STREET TREE IRRIGATION GRAVEL TRENCH (KERB INLET DIVERSION) CROSS SECTION A-A N.T.S.

NATURESTRIP WIDTH (m)	GRAVEL TRENCH OFFSET FROM BACK OF KERB (mm)
≤ 2.50	700
2.80	800
≥ 4.35	1000

GENERAL NOTES

- AT HIGHLY CONSTRAINED SITES, GRAVEL TRENCHES CAN BE MODIFIED IN THE FOLLOWING WAYS:
 - REDUCED OFFSET OF 0.75m FROM TREE CENTRELINE
 - DIMENSION 1.0m LONG x 0.6m WIDE x 0.75m DEEP
 - NATURESTRIP ≤ 2.5m DIMENSION CAN BE 1.5m LONG x 0.4m WIDE x 0.75m DEEP

NOTES:

- FOR PASSIVE STREET TREE IRRIGATION DETAIL REFER TO MELTON CITY COUNCIL STANDARD DRAWING: PASSIVE STREET TREE IRRIGATION GRAVEL TRENCH (KERB INLET DIVERSION)
- PASSIVE IRRIGATION PIPES AND FITTINGS TO BE 90mm PVC SEWER CLASS
- ALL PVC JOINTS TO BE SEALED WITH SOLVENT CEMENT
- ALL GRASSED AREAS TO BE TOP DRESSED WITH 100mm TOPSOIL AND SEEDED AS SPECIFIED

01

COUNCIL STANDARD PASSIVE STREET TREE IRRIGATION GRAVEL TRENCH DETAIL

Scale: NTS

LEGEND

- PROPOSED TREES
Refer Plant Schedule & Detail 02/L01
- REDUCED SERVICE OFFSET
Modified passive irrigation required. To be confirmed on site with Council representative. Note: zone indicated represents 2.5m radius from centre of tree
- GRASSING - HYDROMULCH
Refer Specification
- GRASSING - KIKUYU TURF
Refer Specification
- EXISTING CONTOURS
At 0.20m intervals
- STAGE BOUNDARY

TREE SETOUT NOTES

- Proposed trees may require removal / relocation to allow for services, crossovers and lighting.
- Final setout of trees to be confirmed on site by the Superintendent prior to installation.
- Trees are not to be placed directly above services (including gas and water)
- Trees are to be planted with formed watering basins and mulched.

CULTIVATION NOTE

Cultivation to be approved by the Superintendent prior to Civil placing topsoil.

DRAWING ACCURACY NOTE

This drawing has been prepared upon Engineering drawings which may have been superseded. The Contractor is advised to consult with other trades and the Construction Manager should any discrepancies become apparent prior to & during construction.

SERVICES NOTES

Location of all services are to be confirmed on site. Contact 'Dial Before You Dig' & Refer Civil drawings for services key and further detail.

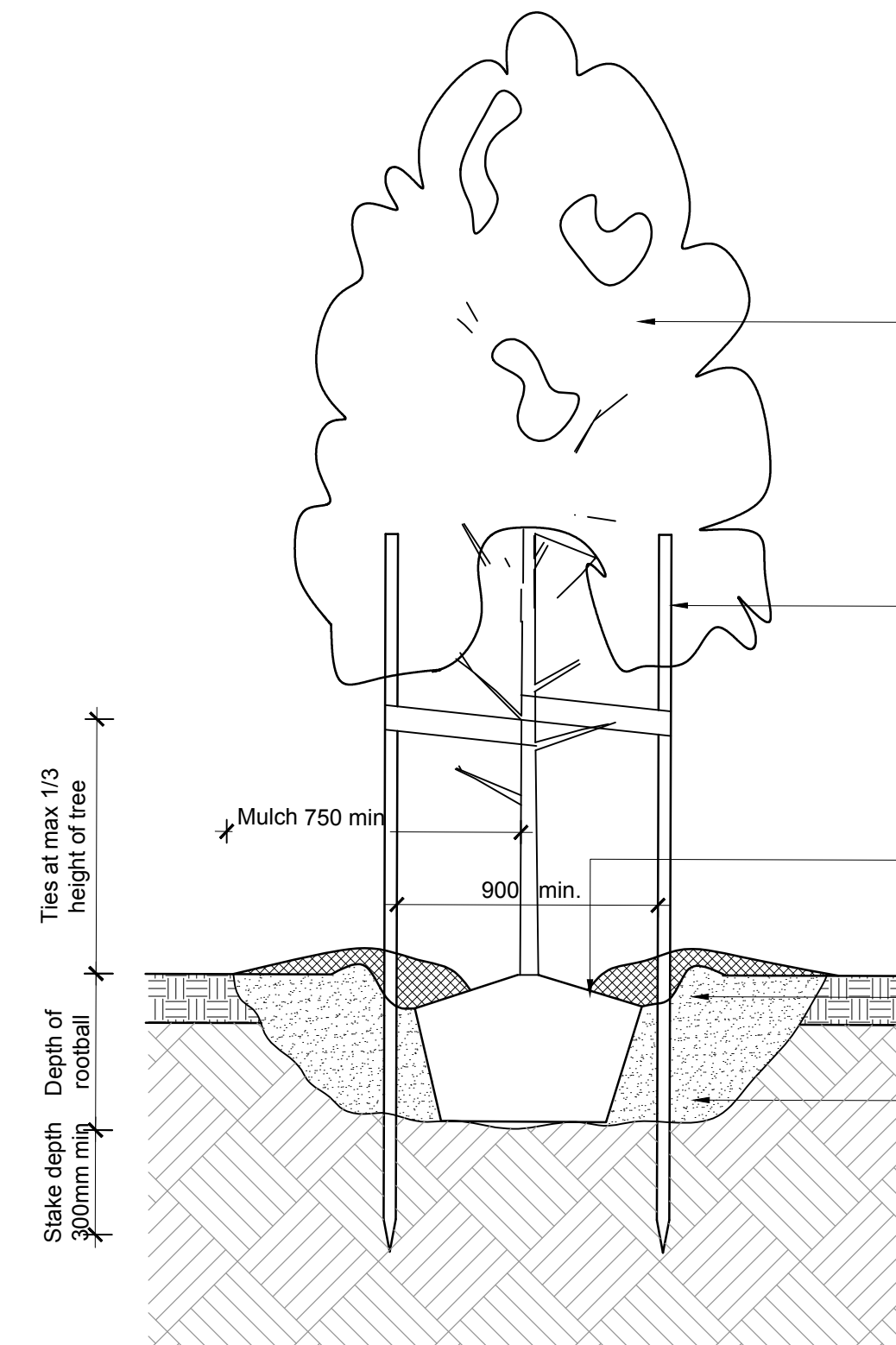
SETOUT NOTE

Setout to be approved on site by the Superintendent prior to commencement of construction works.

02

TYPICAL TREE PLANTING DETAIL

Scale: 1:20 @ A1



All advanced trees to be healthy well-grown specimens free of pests and diseases. Water trees prior to planting.

Stake all trees with 3 No. 50x50x2100mm chisel-pointed hardwood stakes driven 300mm into the ground. Tie trees immediately after planting with flexible rubber or canvas ties in 'figure 8' configuration. Secure ties to stakes by wrapping around stakes and nailing with galvanised nails. NOTE- Stakes are to be painted black.

Place top of rootball flush with finished level of planting hole. Gently tease outer root system avoiding major disturbance of plant. Form a watering saucer around immediate crown of plant to hold at least 35 litres of water. Spread a 100mm layer of approved mulch to saucer. Mulch to be kept 100mm away from trunk.

Apply approved fertiliser at rates as per specification. Avoid direct root contact with fertiliser.

Over excavate hole by at least twice the width of the rootball. Ensure sides of hole are roughened. Depth of planting hole no deeper than the height of the root ball. Break / crack soil at base of hole. Backfill hole with approved soil.

CITY OF MELTON
ENGINEERING PLANS
(LANDSCAPE)
APPROVED
E. Wright 4/2/2020
CITY DESIGN DATE

LIST OF REVISIONS

- REV A**
- Updated base plans (electrical & civil)
 - Show trees for future Taylors Road reserve
 - Add annotations to Detail 02
 - Show reduced offset service zone
 - Adjust tree locations
- REV B**
- Intersection base plan included
 - Turf grassing added
 - Surface treatment to substation noted
 - Street trees to south side of Lily Way included within scope
 - Plant schedule

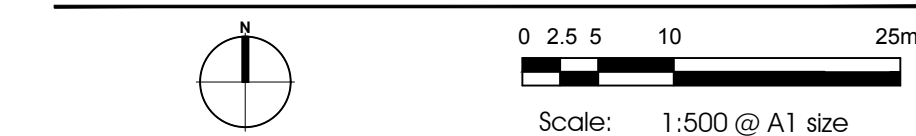
NOT FOR CONSTRUCTION
FOR TOWN PLANNING PURPOSES ONLY

Rev	Date	Description
B	22.01.2020	COUNCIL RESUBMISSION
B-P1	20.01.2020	PROJECT MANAGER REVIEW
A	12.12.2019	COUNCIL ISSUE
A - P1	10.12.2019	ISSUE FOR CONSULTANT REVIEW
-	01.10.2019	COUNCIL ISSUE

GROWLAND PTY LTD

BOTANIA RESIDENTIAL SUBDIVISION
1152-1174 TAYLORS ROAD & 451-471 BEATTYS ROAD, PLUMPTON

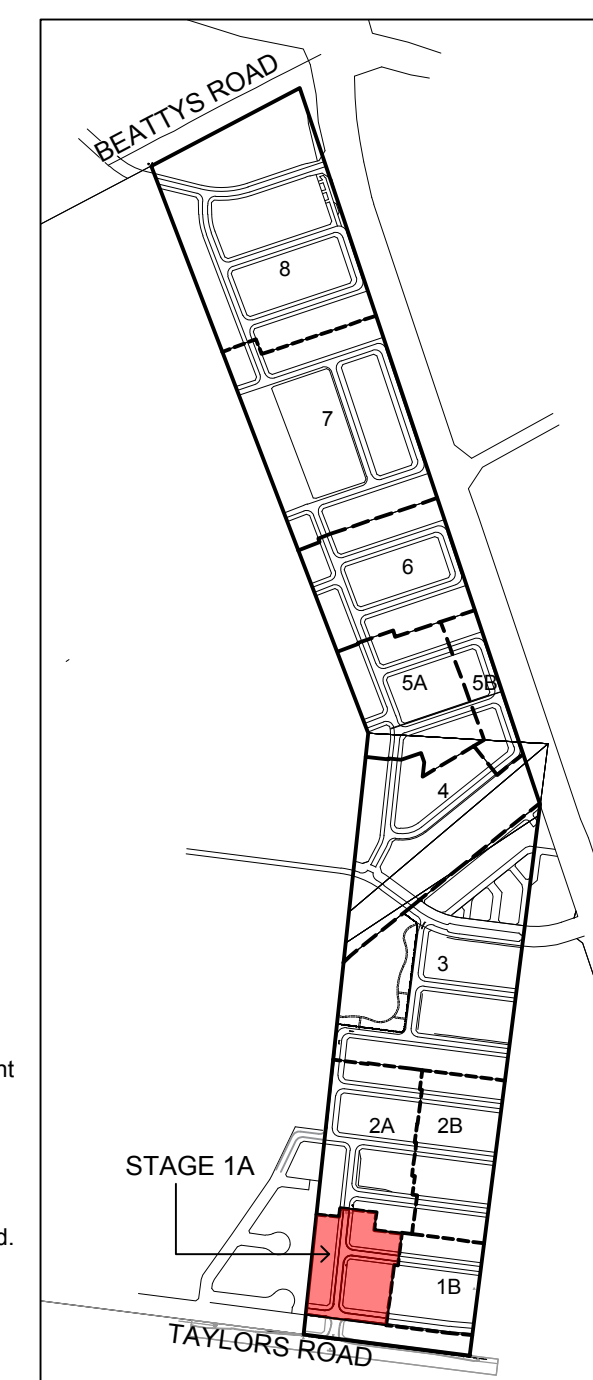
STAGE 1A LANDSCAPE STREETScape PLAN & DETAILS



CDA Design Group Pty Ltd
Landscape Architecture
Urban Design
185 Faraday Street
Carlton Victoria 3053
T 03 9349 5866
F 03 9349 5877
E office@cdaesigngroup.com.au

Project No. 19029_1A
Date: SEPT 2019
Drawn by: ASP/NC
Checked: AP/IV/NC

Drawing No. L01B



KEY PLAN (INDICATIVE STAGING PLAN)
NOT TO SCALE